

Appendix III

Cost Estimates

Table 41 includes an approximate cost for items related to roadway infrastructure, signing and pavement markings; signal and lighting; bus stop shelters and basic amenities; landscaping, and proposed Mobility Hub amenities. The proposed costs are meant as a guide to assist the Town of Cutler Bay as the Town plans for future transportation improvements throughout the community. Table 42 through 44 are the detailed infrastructure cost estimates for the proposed Neighborhood, Community, and Regional Hub improvements proposed in the Conceptual Design section of this report. Tables 45 through 57 are cost estimates for recommended amenities at all proposed Neighborhood, Community, and Regional Mobility Hubs.

COST ESTIMATES: INFRASTRUCTURE IMPROVEMENTS

Table 41: General Costs for Improvements & Amenities

OPINION OF PROBABLE COST CUTLER BAY MOBILITY HUBS PLAN Miami-Dade County				
Pay Item	Description	Unit	Unit Cost	Source
ROADWAY INFRASTRUCTURE				
0101 1	MOBILIZATION (10%)	LS	10%	FDOT
0102 1	MOT (8%)	LS/DA	8%	FDOT
0104 10 3	SEDIMENT BARRIER	LF	\$1.92	FDOT
0104 18	INLET PROTECTION SYSTEM	EA	\$63.21	FDOT
0107 1	LITTER REMOVAL	AC	\$1.92	FDOT
0107 2	MOWING	AC	\$1.70	FDOT
0110 1 1	CLEARING & GRUBBING	AC	\$25,942.11	FDOT
0110 4 10	REMOVAL OF EXISTING CONCRETE PAVEMENT	SY	\$18.17	FDOT
120-6	EMBANKMENT	CY	\$8.51	FDOT
160-4	STABILIZATION TYPE B	SY	\$0.23	FDOT
285-7AA	OPTIONAL BASE, BASE GROUP 10	SY	\$13.03	FDOT
0327 70 5	MILLING EXISTING ASPHALT PAVEMENT 1"	SY	\$5.27	FDOT
0334 1 13	SUPERPAVE ASPHALTIC CONC, TRAFFIC C	TN	\$114.40	FDOT
0337 7 82	ASPH CONC FC, TRAFFIC C, FC-9.5, PG 76-22	TN	\$130.36	FDOT
0520 1 10	CONCRETE CURB & GUTTER, TYPE F	LF	\$22.50	FDOT
0522 1	CONCRETE, 4" THICK - SIDEWALK	SY	\$37.64	FDOT
0522 2	CONCRETE, 6" THICK - CURB RAMPS	SY	\$47.03	FDOT
0522 4	BUS SHELTER PAD - CONCRETE	SY	\$205.40	FDOT
0523 1	PATTERNED PAVEMENT, VEHICLE AREAS (Crosswalk)	SY	\$90.17	FDOT
0523 1 3	PATTERNED PAVEMENT, VEHIC AREAS (Bike Lane)	SY	\$88.73	FDOT

0526 1 2	PAVERS, ARCHITECTURAL, SIDEWALK	SY	\$103.17	FDOT
0527 2	PED DETECTABLE WARNINGS	SF	\$25.12	FDOT
0570 1 2	PERFORMANCE TURF, SOD	SY	\$2.60	FDOT
0646 1 12	ALUMINUM SIGNALS POLE, PED DETECT POST	EA	\$1,235.66	FDOT
0665 1 11	PEDESTRIAN DETECTOR, F&I, STANDARD	EA	\$247.73	FDOT
POROUS PAVEMENT				
	POROUS CONCRETE	SF	\$6.00	https://greenvalues.cnt.org/national/cost_detail.php
	POROUS ASPHALT	SF	\$6.34	https://greenvalues.cnt.org/national/cost_detail.php
	PERMEABLE PAVERS	SF	\$7.10	https://greenvalues.cnt.org/national/cost_detail.php
	FLEXI-PAVE INSTALLATION	SF	\$2.75	
	FLEXI-PAVE MATERIAL	SF	\$6.00	
SIGNING & PAVEMENT MARKING				
0700 1 11	SINGLE POST SIGN, F&I GM, <12 SF	EA	\$358.22	FDOT
0711 15201	THERMOPLASTIC, STD-OP, YELLOW, SOLID, 6"	GM	\$3,655.54	FDOT
0711 16202	THERMOPLASTIC, STD-OT, YELLOW, SOLID, 8"	GM	\$8,901.36	FDOT
0711 15101	THERMOPLASTIC, STD-OP, WHITE, SOLID, 6"	GM	\$3,659.78	FDOT
0710 15102	THERMOPLASTIC, STD-OP, WHITE, SOLID, 8"	GM	\$4,185.06	FDOT
0711 11123	PAINTED PAVT MARK, STD, WHITE, SOLID, 12" (crosswalk)	LF	\$1.66	FDOT
0711 11125	PAINTED PAVT MARK, STD, WHITE, SOLID, 24" (stop bar)	LF	\$3.11	FDOT
0711 11421	THERMOPLASTIC, STD, BLUE, SOLID, 6"	LF	\$7.50	FDOT
0711 14160	THERMOPLASTIC, PREFORMED, WHITE, MESSAGE (bike symbol)	EA	\$273.87	FDOT
0711 14170	THERMOPLASTIC, PREFORMED, WHITE, ARROW (bike arrow)	EA	\$91.45	FDOT
SIGNAL & LIGHTING				
	PEDESTRIAN LIGHTING - METAL	EA	\$1,332.14	
0653 1 12	PEDESTRIAN SIGNAL, F&I LED COUNT, 2 WAYS	EA	\$1,333.14	FDOT
0653 1 11	PEDESTRIAN SIGNAL, F&I LED COUNT, ONE WAYS	EA	\$775.68	FDOT
	STREETLIGHT	EA	\$3,600.00	Cost for Bicycle and Pedestrian Infrastructure Improvements, 2013
	IN-PAVEMENT LIGHTING	TOTAL	\$18,250.00	
BUS STOP				

0751 38 11	BENCH, F&I, ALUMINUM	EA	\$730.70	FDOT
0751 35 11	BUS SHELTER, F&I, UPTO 50	EA	\$29,894.23	FDOT
	TOWN BUS SHELTER: CONCRETE, SHELTER, LIGHTING, WASTE, SEATING, BIKE RACK	EA	\$43,330.00	Town of Cutler Bay
0751 36 12	BICYCLE RACK, FURNISH & INSTALL, 2-6 BI	EA	\$660.89	FDOT
0751 37	TRASH/RECYCLE RECEPTACLE	EA	\$1,533.71	FDOT
0522 4	BUS SHELTER PAD - CONCRETE	SY	\$205.40	FDOT
	USB CHARGING STATION	EA	\$5,000.00	https://kwikboost.com/
LANDSCAPING				
	NATIVE PLANTS	SF	\$0.10	https://greenvalues.cnt.org/national/cost_detail.php
0580 1 1	LANDSCAPE COMPLETE- 10 TREES - 12' to 15'	EA	\$2,000.00	FDOT
0580 1 2	LANDSCAPE COMPLETE- PALM TREES	EA	\$15,000.00	FDOT
	RAINGARDEN	SF	\$7.00	https://greenvalues.cnt.org/national/cost_detail.php
	BIOSWALES	SF	\$15.00	https://greenvalues.cnt.org/national/cost_detail.php
	PLANTER BOXES	SF	\$8.00	https://greenvalues.cnt.org/national/cost_detail.php
AMENITIES				
	BIKESHARE STATION (10 BIKES)	Station	\$54,000.00	Bikeshare Business & Implementation Plan, 2016
	DOCKLESS BICYCLES	EA	\$1,000.00	www.alibaba.com
	ELECTRIC BIKE SHARE (10 BIKES)	Station	\$65,000.00	Bikeshare Business & Implementation Plan, 2016
	BICYCLE REPAIR STATION	EA	\$1,500.00	www.dero.com
	BICYCLE STORAGE LOCKER	EA	\$2,140.00	Cost for Bicycle and Pedestrian Infrastructure Improvements, 2013
	BICYCLE TRAFFIC LIGHT	EA	\$1,000.00	pedbikesafe.org
	SCOOTER SHARE	EA	\$0.00	National League of Cities (2018). Micromobility in Cities A History & Policy Overview.
	CAR SHARE STATION	Station	\$0.00	City of Miami Car Sharing Feasibility Study, 2011
	EV CHARGING STATION	EA	\$8,000.00	Costs Associated with Non-Residential Electric Vehicle Supply Equipment, 2015
	WIFI	EA	\$1,400.00	Vermont Council on Rural Development (Dec. 2014). Planning & Implementing a WIFI Zone in Your Town. Vermont Digital Economy Project.
	PARK & RIDE GARAGE	Space	\$19,700.00	Parking Structure Cost Outlook, 2017
	SHELTER WITH METAL CANOPY AT KISS-N-RIDE	EA	\$3,300.00	Alan's Factory Outlet
	SHELTER INSTALLATION	EA	\$6,000.00	www.improvenet.com
	DIGITAL DISPLAY SIGN: REAL-TIME SIGN INFO	EA	\$400.00	www.alibaba.com
	INFORMATION KIOSK	EA	\$6,000.00	www.alibaba.com

	PACKAGE KIOSK	EA	\$0.00	Guta, Michael (29, Dec. 2017). "What is Amazon Locker and How Can It Benefit Your Business." Small Business Trends
	PUBLIC ART - VARIOUS	EA	Varies	
	PUBLIC ART - BOX WRAPS	EA	\$1,000.00	The Southeast Como Improvement Association
	Air Misting System	EA	\$5,000.00	www.costowl.com
	Security Camera	EA	\$600.00	www.homeadvisor.com
	Emergency Call Box	EA	\$5,500.00	U.S. DOT
	Library Share	EA	\$200.00	https://littlefreelibrary.org/faqs/
	USB Charge Station	EA	\$1,500.00	https://kwikboost.com/
	Wayfinding	Plan	\$40,000.00	https://guidestudio.com/
	Solar Panel	kW	\$2,990.00	www.energysage.com
Notes: MEI has no control over competitive bidding or market conditions or the cost of labor, materials, equipment, or over the contractor's methods of determining prices. The quantities and pricing used in the Opinion of Probable Cost were composed based on FDOT historical cost and our engineering opinion and judgement. Opinions of Probable Cost represent only the Engineers judgement as a design professional familiar with the construction industry. MEI nor the signing Engineer cannot and does not guarantee that proposals, bids, or actual construction cost will not vary from the values stated in this document.		CONTI-NGENCY	10%	
		DESIGN	20%	
		SURVEY	5%	
		CEI	5%	

Table 42: Lakes by the Bay Neighborhood Hub Cost Estimate

OPINION OF PROBABLE COST CUTLER BAY MOBILITY HUBS PLAN Lakes by the Bay Neighborhood Hub (SW 85 Ave & SW 212 St) Miami-Dade County					
Pay Item	Description	Unit	Qty	Unit Cost	Cost
ROADWAY INFRASTRUCTURE					
0101 1	MOBILIZATION (10%)	LS		10%	\$29,318.47
0102 1	MOT (8%)	LS/DA		8%	\$23,454.78
0104 10 3	SEDIMENT BARRIER	LF	1,731.00	\$1.92	\$3,323.52
0104 18	INLET PROTECTION SYSTEM	EA	4.00	\$63.21	\$252.84
0110 1 1	CLEARING & GRUBBING	AC	0.59	\$25,942.11	\$15,378.56
0110 4 10	REMOVAL OF EXISTING CONCRETE PAVEMENT	SY	350.00	\$18.17	\$6,359.50
0120 1	REGULAR EXCAVATION	CY	16.11	\$7.29	\$117.45
120-6	EMBANKMENT	CY	16.11	\$8.51	\$137.10
160-4	STABILIZATION TYPE B	SY	96.67	\$0.23	\$22.23
285-7AA-	OPTIONAL BASE, BASE GROUP 10	SY	96.67	\$13.03	\$1,259.57

0327 70 5	MILLING EXISTING ASPHALT PAVEMENT 1"	SY	96.67	\$5.27	\$509.43
0334 1 13	SUPERPAVE ASPHALTIC CONC, TRAFFIC C	TN	4.71	\$114.40	\$538.63
0337 7 83	ASPH CONC FC,TRAFFIC C,FC-12.5,PG 76-22	TN	4.71	\$146.57	\$690.34
0520 1 10	CONCRETE CURB & GUTTER, TYPE F	LF	140.00	\$22.50	\$3,150.00
0522 1	CONCRETE, 4" THICK - SIDEWALK	SY	46.67	\$37.64	\$1,756.53
0522 2	CONCRETE, 6" THICK - CURB RAMPS	SY	50.00	\$47.03	\$2,351.50
0522 4	BUS SHELTER PAD - CONCRETE	SY	30.00	\$205.40	\$6,162.00
BIKELANE CONSTRUCTION					
0523 1 3	NORTHSIDE - PATTERNED PAVEMENT, VEHIC AREAS (Bike Lane) - 4 feet bike lane on SW 85 Ave from SW 207th St. to South of SW 212 St	SY	977.78	\$88.73	\$86,758.22
	SOUTHSIDE				
0110 1 1	CLEARING & GRUBBING	AC	0.10	\$25,942.11	\$2,594.21
0120 1	REGULAR EXCAVATION	CY	40.74	\$7.29	\$297.00
120-6	EMBANKMENT	CY	40.74	\$8.51	\$346.70
160-4	STABILIZATION TYPE B	SY	244.44	\$0.23	\$56.22
285-7AA-	OPTIONAL BASE, BASE GROUP 10	SY	244.44	\$13.03	\$3,185.05
0334 1 13	SUPERPAVE ASPHALTIC CONC, TRAFFIC C	TN	18.33	\$114.40	\$2,097.33
0337 7 83	ASPH CONC FC,TRAFFIC C,FC-12.5,PG 76-22	TN	9.17	\$146.57	\$1,344.05
0523 1 3	PATTERNED PAVEMENT, VEHIC AREAS (Bike Lane) - 4 feet bike lane on SW 85 Ave from SW 207th St. to South of SW 212 St	SY	977.78	\$88.73	\$86,758.22
0527 2	PED DETECTABLE WARNINGS	SF	108.00	\$25.12	\$2,712.96
0570 1 2	PERFORMANCE TURF, SOD	SY	394.44	\$2.60	\$1,025.56
0580 1 1	LANDSCAPE COMPLETE- SMALL PLANTS - 10 tress - 12' to 15'	EA	32.00	\$2,000.00	\$64,000.00
		TOTAL ROADWAY			\$345,957.99
SIGNING & PAVEMENT MARKING					
0711 15201	THERMOPLASTIC, STD-OP,YELLOW, SOLID, 6"	GM	0.316	\$3,655.54	\$1,156.20
0711 15101	THERMOPLASTIC, STD-OP, WHITE, SOLID, 6"	GM	0.625	\$3,659.78	\$2,287.36
0711 16131	THERMOPLASTIC, STD-OTH, WHITE, SKIP, 6"	GM	0.021	\$1,375.45	\$28.66
0710 11160	PAINTED PAVT MARK,STD,WHITE, MESSAGE	EA	1.000	\$34.46	\$34.46
0710 11170	PAINTED PAVT MARK,STD,WHITE, ARROWS	EA	7.000	\$20.01	\$140.07
0710 11290	PAINTED PAVT MARK,STD,YELLOW,ISLAND NOSE	SF	200.000	\$3.49	\$698.00
0711 11123	PAINTED PAVT MARK,STD,WHITE,SOLID, 12" (crosswalk)	LF	420.000	\$1.66	\$697.20
0711 11125	PAINTED PAVT MARK,STD,WHITE,SOLID,24" (stop bar)	LF	600.000	\$3.11	\$1,866.00
0711 14160	THERMOPLASTIC, PREFORMED, WHITE, MESSAGE (bike symbol)	EA	2.000	\$273.87	\$547.74
0711 14170	THERMOPLASTIC, PREFORMED, WHITE, ARROW (bike arrow)	EA	2.000	\$91.45	\$182.90
0700 1 11	SINGLE POST SIGN, F&I GM, <12 SF	EA	6.00	\$358.22	\$2,149.32
		TOTAL SIGNING & MARKING			\$7,638.59
Notes: MEI has no control over competitive bidding or market conditions or the cost of labor, materials, equipment, or over the contractor's methods of determining prices. The quantities and pricing used in the Opinion of Probable Cost were composed based on FDOT historical cost and our engineering opinion and judgement. Opinions of Probable Cost represent only the Engineers judgement as a design professional familiar with the construction industry. MEI		SUB TOTAL			\$353,596.58
		CONTINGENCY		10%	\$35,359.66
		DESIGN		20%	\$70,719.32
		SURVEY		5%	\$0.00

nor the signing Engineer cannot and does not guarantee that proposals, bids, or actual construction cost will not vary from the values stated in this document.	CEI	5%	\$17,679.83
	GRAND TOTAL		\$477,355.38

Table 43: Caribbean Boulevard Community Hub Cost Estimate

OPINION OF PROBABLE COST CUTLER BAY MOBILITY HUBS PLAN Caribbean Boulevard Community Hub (SW 200 St. & US 1) Miami-Dade County					
Pay Item	Description	Unit	Qty	Unit Cost	Cost
ROADWAY INFRASTRUCTURE					
0101 1	MOBILIZATION (10%)	LS		10%	\$36,326.26
0102 1	MOT (8%)	LS/DA		8%	\$29,061.01
0104 10 3	SEDIMENT BARRIER	LF	700.00	\$1.92	\$1,344.00
0104 18	INLET PROTECTION SYSTEM	EA	4.00	\$63.21	\$252.84
0110 1 1	CLEARING & GRUBBING	AC	0.65	\$25,942.11	\$16,862.37
0110 4 10	REMOVAL OF EXISTING CONCRETE PAVEMENT	SY	364.00	\$18.17	\$6,613.88
0120 1	REGULAR EXCAVATION	CY	2,350.00	\$7.29	\$17,131.50
120-6	EMBANKMENT	CY	2,350.00	\$8.51	\$19,998.50
160-4	STABILIZATION TYPE B	SY	3,080.00	\$0.23	\$708.40
285-7AA-	OPTIONAL BASE, BASE GROUP 10	SY	3,080.00	\$13.03	\$40,132.40
0334 1 13	SUPERPAVE ASPHALTIC CONC, TRAFFIC C	TN	231.00	\$114.40	\$26,426.40
0520 1 10	CONCRETE CURB & GUTTER, TYPE F	LF	420.00	\$22.50	\$9,450.00
0522 1	CONCRETE, 4" THICK - SIDEWALK	SY	1,477.22	\$37.64	\$55,602.64
0522 2	CONCRETE, 6" THICK - CURB RAMPS	SY	90.00	\$47.03	\$4,232.70
0522 4	BUS SHELTER PAD - CONCRETE	SY	9.00	\$205.40	\$1,848.60
0526 1 2	PAVERS, ARCHITECTURAL, SIDEWALK	SY	364.00	\$103.17	\$37,553.88
0527 2	PED DETECTABLE WARNINGS	SF	270.00	\$25.12	\$6,782.40
0570 1 2	PERFORMANCE TURF, SOD	SY	988.89	\$2.60	\$2,571.11
0580 1 1	LANDSCAPE COMPLETE- 10 TREES - 12' to 15'	EA	40.00	\$2,000.00	\$80,000.00
0550 10210	FENCING, TYPE B, 0.0-5.0', STANDARD FEAT	LF	75.00	\$22.53	\$1,689.75
	SHELTER WITH METAL CANOPY AT KISS-N-RIDE	EA	1.00	\$12,086.25	\$12,086.25
	SHELTER INSTALLATION	EA	1.00	\$21,975.00	\$21,975.00
TOTAL ROADWAY					\$428,649.90
SIGNING & PAVEMENT MARKING					
0711 15101	THERMOPLASTIC, STD-OP, WHITE, SOLID, 6"	GM	0.221	\$3,659.78	\$807.51
0710 11170	PAINTED PAVT MARK,STD,WHITE, ARROWS	EA	3.000	\$20.01	\$60.03
0711 11123	PAINTED PAVT MARK,STD,WHITE,SOLID, 12" (crosswalk)	LF	860.000	\$1.66	\$1,427.60
0711 11125	PAINTED PAVT MARK,STD,WHITE,SOLID,24" (stop bar)	LF	1006.000	\$3.11	\$3,128.66

0700 1 11	SINGLE POST SIGN, F&I GM, <12 SF	EA	1.00	\$358.22	\$358.22
		TOTAL SIGNING & MARKING			\$5,782.02
<i>Notes: MEI has no control over competitive bidding or market conditions or the cost of labor, materials, equipment, or over the contractor's methods of determining prices. The quantities and pricing used in the Opinion of Probable Cost were composed based on FDOT historical cost and our engineering opinion and judgement. Opinions of Probable Cost represent only the Engineers judgement as a design professional familiar with the construction industry. MEI nor the signing Engineer cannot and does not guarantee that proposals, bids, or actual construction cost will not vary from the values stated in this document.</i>		SUB TOTAL			\$434,431.92
		CONTINGENCY		10%	\$43,443.19
		DESIGN		20%	\$86,886.38
		SURVEY		5%	\$0.00
		CEI		5%	\$21,721.60
		GRAND TOTAL			\$586,483.09

Table 44: Cutler Bay Regional Hub Cost Estimate

OPINION OF PROBABLE COST CUTLER BAY MOBILITY HUBS PLAN Cutler Bay Regional Hub (SW 112 Ave & US 1) Miami-Dade County					
Pay Item	Description	Unit	Qty	Unit Cost	Cost
ROADWAY INFRASTRUCTURE					
0101 1	MOBILIZATION (10%)	LS		10%	\$27,687.14
0102 1	MOT (8%)	LS/DA		8%	\$22,149.71
0104 10 3	SEDIMENT BARRIER	LF	1,000.00	\$1.92	\$1,920.00
0104 18	INLET PROTECTION SYSTEM	EA	4.00	\$63.21	\$252.84
0110 1 1	CLEARING & GRUBBING	AC	0.12	\$25,942.11	\$3,113.05
0110 4 10	REMOVAL OF EXISTING CONCRETE PAVEMENT	SY	490.00	\$18.17	\$8,903.30
0120 1	REGULAR EXCAVATION	CY	147.04	\$7.29	\$1,071.90
120-6	EMBANKMENT	CY	147.04	\$8.51	\$1,251.29
160-4	STABILIZATION TYPE B	SY	570.00	\$0.23	\$131.10
285-7AA-	OPTIONAL BASE, BASE GROUP 10	SY	570.00	\$13.03	\$7,427.10
0327 70 5	MILLING EXISTING ASPHALT PAVEMENT 1"	SY	46.00	\$5.27	\$242.42
0337 7 83	ASPH CONC FC, TRAFFIC C, FC-12.5, PG 76-22	TN	14.63	\$146.57	\$2,144.81
0334 1 13	SUPERPAVE ASPHALTIC CONC, TRAFFIC C	TN	7.32	\$114.40	\$837.03
0520 1 10	CONCRETE CURB & GUTTER, TYPE F	LF	173.00	\$22.50	\$3,892.50
0522 1	CONCRETE, 4" THICK - SIDEWALK	SY	445.11	\$37.64	\$16,753.98
0522 2	CONCRETE, 6" THICK - CURB RAMPS	SY	124.44	\$47.03	\$5,852.62
0522 4	BUS SHELTER PAD - CONCRETE	SY	65.11	\$205.40	\$13,373.82
0526 1 2	PAVERS, ARCHITECTURAL, SIDEWALK	SY	1,272.22	\$103.17	\$131,255.17
0527 2	PED DETECTABLE WARNINGS	SF	497.00	\$25.12	\$12,484.64
0570 1 2	PERFORMANCE TURF, SOD	SY	524.56	\$2.60	\$1,363.84
0580 1 1	LANDSCAPE COMPLETE- SMALL PLANTS - 10 tress - 12' to 15'	EA	23.00	\$2,000.00	\$46,000.00

	SHELTER WITH METAL CANOPY AT KISS-N-RIDE	EA	2.00	\$3,300.00	\$6,600.00
	SHELTER INSTALLATION	EA	2.00	\$6,000.00	\$12,000.00
		TOTAL ROADWAY			\$326,708.26
SIGNING & PAVEMENT MARKING					
0711 15201	THERMOPLASTIC, STD-OP,YELLOW, SOLID, 6"	GM	0.030	\$3,655.54	\$110.77
0711 15101	THERMOPLASTIC, STD-OP, WHITE, SOLID, 6"	GM	0.070	\$3,659.78	\$256.46
0710 11170	PAINTED PAVT MARK,STD,WHITE, ARROWS	EA	3.000	\$20.01	\$60.03
0711 11123	PAINTED PAVT MARK,STD,WHITE,SOLID, 12" (crosswalk)	LF	1350.000	\$1.66	\$2,241.00
0711 11125	PAINTED PAVT MARK,STD,WHITE,SOLID,24" (stop bar)	LF	2310.000	\$3.11	\$7,184.10
0700 1 11	SINGLE POST SIGN, F&I GM, <12 SF	EA	10.00	\$358.22	\$3,582.20
		TOTAL SIGNING & MARKING			\$13,434.57
<i>Notes: MEI has no control over competitive bidding or market conditions or the cost of labor, materials, equipment, or over the contractor's methods of determining prices. The quantities and pricing used in the Opinion of Probable Cost were composed based on FDOT historical cost and our engineering opinion and judgement. Opinions of Probable Cost represent only the Engineers judgement as a design professional familiar with the construction industry. MEI nor the signing Engineer cannot and does not guarantee that proposals, bids, or actual construction cost will not vary from the values stated in this document.</i>		SUB TOTAL			\$340,142.83
		CONTINGENCY		10%	\$34,014.28
		DESIGN		20%	\$68,028.57
		SURVEY		5%	\$0.00
		CEI		5%	\$17,007.14
		GRAND TOTAL			\$459,192.82

COST ESTIMATES: MOBILITY HUB AMENITIES

The proposed cost estimates for the amenities include a total estimated investment which include recommended and optional amenities, and a minimum investment amount which include only the recommended amenities. Cost estimates were based on research related to the item, for a reference of the cost see Table 41. Cost estimates are provided as a guide for the Town of Cutler Bay to use for planning and investment purposes. Some items, such as carsharing and package kiosks do not include a cost as these services are often provided by a private party with an agreement in place with the municipality. Additionally, items such as package kiosks and carsharing may incur administrative costs for the municipality to pass resolutions and/or ordinances related to that item to ensure zoning regulations are in place. Tables 45 through 57 include approximate cost estimates for the proposed recommended amenities for each Mobility Hub referenced in this plan.

Table 45: Cutler Bay Regional Mobility Hub Amenities Cost Estimate

CUTLER BAY REGIONAL MOBILITY HUB					
Recommended Amenities	Unit	Measurement	Price	Quantity	Cost
Bikeshare Station	EA	10 Bikes	\$ 54,000.00	1	\$ 54,000.00
Mechanical Box Wraps	EA	\$15/SF (Avg Cost for Material & Install)	\$ 1,000.00	1	\$ 1,000.00
USB Charging Station	EA	Free Standing Station (10 phones)	\$ 1,500.00	1	\$ 1,500.00
Bicycle Storage Locker	EA	Equipment & Installation	\$ 2,140.00	6	\$ 12,840.00
Carshare		Public Private Partnership	\$ 0.00	Varies	\$ 0.00
Package Kiosk	EA	Amazon Locker	\$ 0.00	1	\$ 0.00
Security Camera	EA	Equipment & Installation	\$ 600.00	4	\$ 2,400.00
Bicycle Repair Station	EA	Equipment & Installation	\$ 1,500.00	1	\$ 1,500.00
Bicycle Signal	EA	Equipment	\$ 1,000.00	2	\$ 2,000.00
Emergency Callbox	EA	Unit & Construction	\$ 5,500.00	3	\$ 16,500.00
Real Time Information Signage	EA	Unit	\$ 400.00	3	\$ 1,200.00
Recycle Receptacle	EA	Unit	\$ 500.00	2	\$ 1,000.00
Library Share	EA	Equipment, Install & Registration	\$ 200.00	1	\$ 200.00
Info Kiosk	EA	75" Digital Display Board	\$ 6,000.00	1	\$ 6,000.00
WIFI	EA	Equipment & Installation	\$ 400.00	1	\$ 400.00
EV Charging Stations	EA	Equipment & Installation	\$ 8,000.00	6	\$ 48,000.00
Air Misting System	EA	Equipment & Installation	\$ 5,000.00	1	\$ 5,000.00
TOTAL ESTIMATED INVESTMENT					\$ 153,540.00

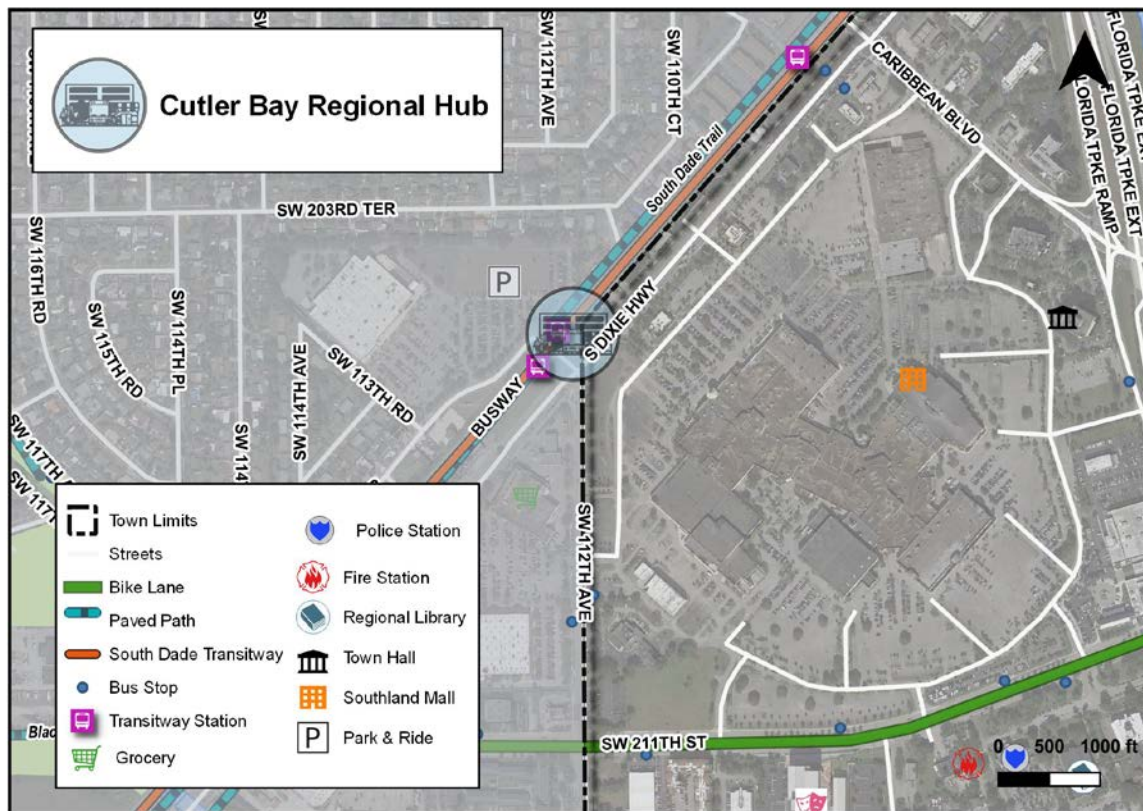


Figure 93: Cutler Bay Regional Hub Location

Table 46: Caribbean Boulevard Community Hub Amenities Cost Estimate

CARIBBEAN BOULEVARD COMMUNITY MOBILITY HUB					
Recommended Amenities	Unit	Measurement	Price	Quantity	Cost
Standard Town Shelter	EA	Shelter, Seating, Garbage, Bike Rack, Lighting, Concrete	\$ 43,330.00	2	\$ 86,660.00
Real Time Information Signage	EA	Equipment & Installation	\$ 400.00	5	\$ 2,000.00
EV Charging Stations	EA	Equipment & Installation	\$ 8,000.00	4	\$ 32,000.00
Bikeshare Station	EA	10 Bikes	\$ 54,000.00	1	\$ 54,000.00
Bicycle Storage Locker	EA	Equipment & Installation	\$ 2,140.00	3	\$ 6,420.00
Carshare		Public Private Partnership	\$ 00.0	Varies	\$ 00.0
USB Charging Station	EA	Free Standing Station for 10 phones	\$ 1,500.00	1	\$ 1,500.00
Package Kiosk	EA	Public Private Partnership	\$ 00.0	1	\$ 0.00
Security Camera	EA	Equipment & Installation	\$ 600.00	5	\$ 3,000.00
Emergency Callbox	EA	Unit & Construction	\$ 5,500.00	5	\$ 27,500.00
Library Share	EA	Equipment, Install & Registration	\$ 200.00	1	\$ 200.00
Mechanical Box Wraps	EA	\$15/SF - Avg. Cost of Installation & Material	\$ 1,000.00	1	\$ 1,000.00
OPTIONAL:					
Bicycle Signal	EA	Equipment	\$ 1,000.00	2	\$ 2,000.00
Bicycle Repair Station	EA	Equipment & Installation	\$ 1,500.00	1	\$ 1,500.00
Info Kiosk	EA	75" Digital Display Board	\$ 6,000.00	1	\$ 6,000.00
WIFI	EA	Equipment & Installation	\$ 400.00	1	\$ 400.00
Air Misting System	EA	Equipment & Installation	\$ 5,000.00	2	\$ 10,000.00
TOTAL ESTIMATED INVESTMENT					\$ 234,180.00
MINIMUM ESTIMATED INVESTMENT					\$ 214,280.00

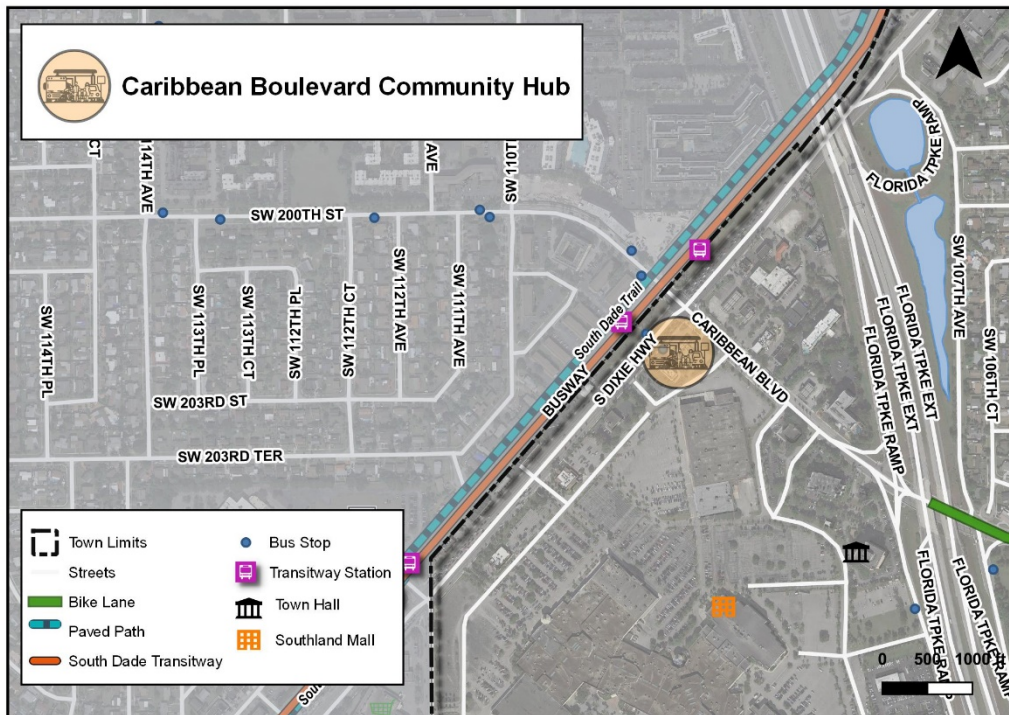


Figure 94: Caribbean Boulevard Community Hub Location Map

Table 47: Eureka Drive West Community Hub Amenities Cost Estimate

EUREKA DRIVE WEST COMMUNITY MOBILITY HUB					
Recommended Amenities	Unit	Measurement	Price	Quantity	Cost
Standard Town Bus Shelter	EA	Shelter, Seating, Garbage, Bike Rack, Lighting, Concrete	\$ 43,330.00	1	\$ 43,330.00
Library Share	EA	Equipment, Install & Registration	\$ 200.00	1	\$ 200.00
Bikeshare Station	EA	10 Bikes	\$ 54,000.00	1	\$ 54,000.00
Mechanical Box Wraps	EA	\$15/SF / Approx. Cost Material & Install	\$ 1,000.00	1	\$ 1,000.00
Emergency Callbox	EA	Unit & Construction	\$ 5,500.00	1	\$ 5,500.00
USB Charging Station	EA	Free Standing Station for 10 phones	\$ 1,500.00	1	\$ 1,500.00
Bicycle Storage Locker	EA	Equipment & Installation	\$ 2,140.00	4	\$ 8,560.00
EV Charging Stations	EA	Equipment & Installation	\$ 8,000.00	4	\$ 32,000.00
Security Camera	EA	Equipment & Installation	\$ 600.00	1	\$ 600.00
Real Time Information Signage	EA	Unit	\$ 400.00	1	\$ 400.00
OPTIONAL:					
Carshare		Public Private Partnership	\$ 00.0	Varies	\$0.00
Package Kiosk	EA	Public Private Partnership	\$ 00.0	1	\$0.00
Bicycle Repair Station	EA	Equipment & Installation	\$ 1,500.00	1	\$ 1,500.00
Bicycle Signal	EA	Equipment	\$ 1,000.00	4	\$ 4,000.00
Info Kiosk	EA	75" Digital Display Board	\$ 6,000.00	1	\$ 6,000.00
Air Misting System	EA	Equipment & Installation	\$5,000.00	1	\$ 5,000.00
TOTAL ESTIMATED INVESTMENT					\$ 163,590.00
MINIMUM ESTIMATED INVESTMENT					\$ 147,090.00

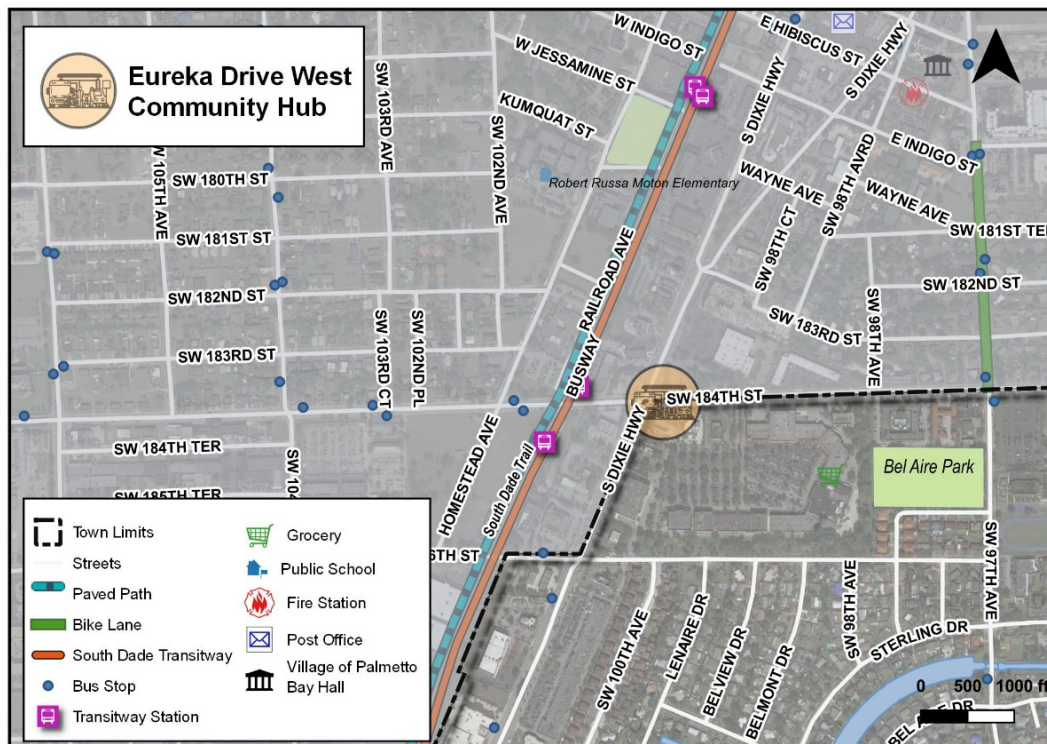


Figure 95: Eureka Drive West Community Hub Location Map

Table 48: Old Town Center Community Hub Amenities Cost Estimate

OLD TOWN CENTER COMMUNITY MOBILITY HUB					
Recommended Amenities	Unit	Measurement	Price	Quantity	Cost
Mechanical Box Wraps	EA	\$15/SF - Avg Cost Material & Install	\$ 1,000.00	3	\$ 3,000.00
Bike Rental Station	EA	10 Bikes	\$54,000.00	1	\$ 54,000.00
Recycle Receptacle	EA	Equipment & Installation	\$ 500.00	2	\$ 1,000.00
Real Time Information Signage	EA	Equipment & Installation	\$ 400.00	2	\$ 800.00
Library Share	EA	Equipment, Install & Registration	\$ 200.00	1	\$ 200.00
Info Kiosk	EA	75" Digital Display Board	\$ 6,000.00	1	\$ 6,000.00
USB Charging Station	EA	Free Standing Station for 10 phones	\$ 1,500.00	1	\$ 1,500.00
EV Charging Stations	EA	Equipment & Installation	\$ 8,000.00	2	\$ 16,000.00
Security Camera	EA	Equipment & Installation	\$ 600.00	2	\$ 1,200.00
Emergency Call Box	EA	Unit & Construction	\$5,500.00	2	\$ 11,000.00
OPTIONAL:					
Bicycle Storage Locker	EA	Equipment & Installation	\$2,140.00	2	\$ 4,280.00
Carshare		Public Private Partnership	\$ 0.00	Varies	\$ 00.0
Package Kiosk	EA	Public Private Partnership	\$ 0.00	1	\$ 0.00
Bicycle Repair Station	EA	Equipment & Installation	\$1,500.00	1	\$ 1,500.00
Air Misting System	EA	Equipment & Installation	\$5,000.00	2	\$ 10,000.00
WIFI	EA	Equipment & Installation	\$ 400.00	1	\$ 400.00
TOTAL INVESTMENT					\$ 110,880.00
MINIMUM INVESTMENT					\$ 94,700.00



Figure 96: Old Town Center Community Hub Location Map

Table 49: Community Health Neighborhood Hub Amenities Cost Estimate

COMMUNITY HEALTH NEIGHBORHOOD HUB					
Recommended Amenities	Unit	Measurement	Price	Quantity	Cost
Shelter	EA	Standard Shelter	\$ 29,894.23	2	\$59,788.46
Bench	EA	Aluminum	\$ 730.70	2	\$ 1,461.40
Bike Rack	EA	2-6 Bikes	\$ 660.89	2	\$ 1,321.78
Bike Rental Station	EA	Station (10 Bikes)	\$ 54,000.00	1	\$54,000.00
Bicycle Storage Locker	EA	Equipment & Installation	\$ 2,140.00	2	\$ 4,280.00
USB Charging Station	EA	Free Standing Station (10 phones)	\$ 1,500.00	1	\$ 1,500.00
Security Camera	EA	Equipment & Installation	\$ 600.00	2	\$ 1,200.00
Trash/Recycle Receptacle	EA	Equipment & Installation	\$ 500.00	2	\$ 1,000.00
Real Time Information Signage	EA	Equipment & Installation	\$ 400.00	2	\$ 800.00
Library Share	EA	Equipment, Install & Registration	\$ 200.00	1	\$ 200.00
Emergency Call Box	EA	Unit & Construction	\$ 5,500.00	1	\$ 5,500.00
OPTIONAL:					
EV Charging Stations	EA	Equipment & Installation	\$ 8,000.00	2	\$ 16,000.00
Package Kiosk	EA	Public Private Partnership	\$ 0.00	1	\$ 0.00
Info Kiosk	EA	75" Digital Display Board	\$ 6,000.00	1	\$ 6,000.00
Air Misting System	EA	Equipment & Installation	\$ 5,000.00	2	\$ 10,000.00
Carshare		Public Private Partnership	\$ 0.00	Varies	\$ 0.00
WIFI	EA	Equipment & Installation	\$ 400.00	1	\$ 400.00
TOTAL INVESTMENT					\$163,451.64
MINIMUM INVESTMENT					\$131,051.64



Figure 97: Community Health Neighborhood Hub Location Map

Table 50: Whispering Pine Neighborhood Hub Amenities Cost Estimate

WHISPERING PINE ROAD NEIGHBORHOOD HUB					
Recommended Amenities	Unit	Measurement	Price	Quantity	Cost
Standard Town Shelter	EA	Shelter, Seating, Garbage, Bike Rack, Lighting, Concrete	\$43,330.00	2	\$ 86,660.00
Real Time Information Signage	EA	Equipment & Installation	\$ 400.00	2	\$ 800.00
Library Share	EA	Equipment, Install & Registration	\$ 200.00	1	\$ 200.00
Bike Share	EA	Station (10 Bikes)	\$54,000.00	1	\$ 54,000.00
USB Charging Station	EA	Free Standing Station (10 phones)	\$ 1,500.00	1	\$ 1,500.00
Emergency Callbox	EA	Equipment & Installation	\$ 5,500.00	2	\$ 11,000.00
OPTIONAL:					
Bicycle Signal	EA	Equipment	\$ 1,000.00	4	\$ 4,000.00
Air Misting System	EA	Equipment & Installation	\$ 5,000.00	2	\$ 10,000.00
Security Camera	EA	Equipment & Installation	\$ 600.00	2	\$ 1,200.00
TOTAL INVESTMENT					\$ 169,360.00
MINIMUM INVESTMENT					\$ 154,160.00

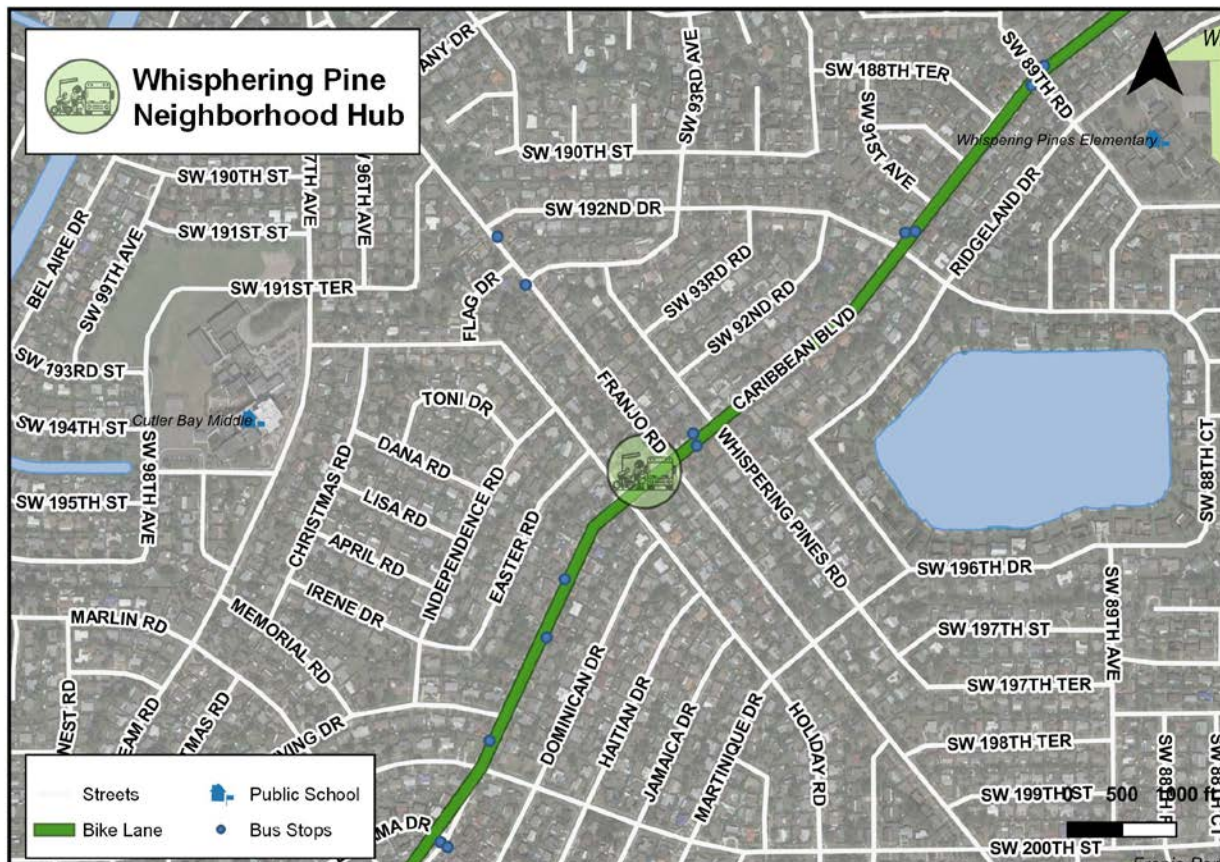


Figure 98: Whispering Pine Neighborhood Hub Location Map

Table 51: Pine Wood Neighborhood Hub Amenities Cost Estimate

PINE WOOD NEIGHBORHOOD MOBILITY HUB					
Recommended Amenities	Unit	Measurement	Price	Quantity	Cost
Standard Town Shelter	EA	Shelter, Seating, Garbage, Bike Rack, Lighting, Concrete	\$ 43,330.00	2	\$ 86,660.00
Real Time Information Signage	EA	Equipment & Installation	\$ 400.00	2	\$ 800.00
Bike Share	EA	Station (10 Bikes)	\$ 54,000.00	1	\$ 54,000.00
Emergency Callbox	EA	Equipment & Installation	\$ 5,500.00	2	\$ 11,000.00
Mechanical Box Wrap	EA	\$15/SF (Avg. Cost of Material & Install)	\$ 1,000.00	5	\$ 5,000.00
Library Share	EA	Equipment, Install & Registration	\$ 200.00	1	\$ 200.00
USB Charging Station	EA	Free Standing Station (10 phones)	\$ 1,500.00	1	\$ 1,500.00
OPTIONAL:					
WIFI	EA	Equipment & Installation	\$ 400.00	1	\$ 400.00
Security Camera	EA	Equipment & Installation	\$ 600.00	2	\$ 1,200.00
Air Misting System	EA	Equipment & Installation	\$ 5,000.00	2	\$ 10,000.00
Package Kiosk	EA	Public Private Partnership	\$ 0.00	1	\$ 0.00
TOTAL INVESTMENT					\$ 170,760.00
MINIMUM INVESTMENT					\$ 157,660.00

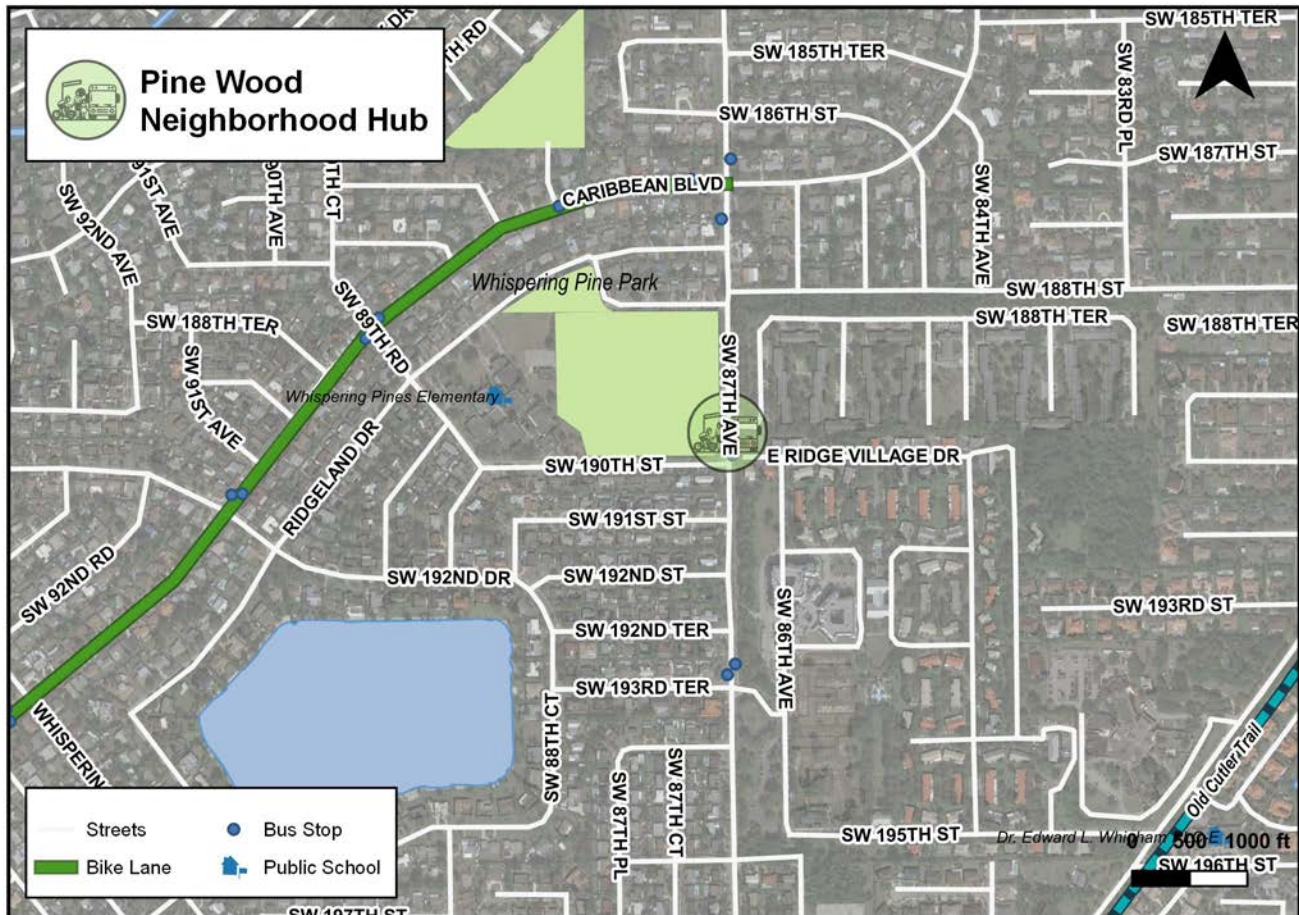


Figure 99: Pine Wood Neighborhood Hub Location Map

Table 52: Isles of Bayshore Neighborhood Hub Amenities Cost Estimate

THE ISLES OF BAYSHORE NEIGHBORHOOD MOBILITY HUB					
Recommended Amenities	Unit	Measurement	Price	Quantity	Cost
Standard Town Shelter	EA	Shelter, Seating, Garbage, Bike Rack, Lighting, Concrete	\$43,330.00	1	\$ 43,330.00
Real Time Information Signage	EA	Equipment & Installation	\$ 400.00	1	\$ 400.00
USB Charging Station	EA	Free Standing Station for 10 phones	\$ 1,500.00	1	\$ 1,500.00
Bike Share	EA	Station - 10 Bikes	\$54,000.00	1	\$ 54,000.00
Emergency Callbox	EA	Equipment & Installation	\$ 5,500.00	1	\$ 5,500.00
Library Share	EA	Equipment, Install & Registration	\$ 200.00	1	\$ 200.00
OPTIONAL:					
WIFI	EA	Equipment & Installation	\$ 400.00	1	\$ 400.00
Package Kiosk	EA	Public Private Partnership	\$ 0.00	1	\$ 0.00
Security Camera	EA	Equipment & Installation	\$ 600.00	1	\$ 600.00
Carshare		Public Private Partnership	\$ 0.00	Varies	\$ 0.00
EV Charging	EA	Equipment & Installation	\$ 8,000.00	2	\$ 16,000.00
Air Misting System	EA	Equipment & Installation	\$ 5,000.00	1	\$ 5,000.00
Bicycle Repair Station	EA	Equipment & Installation	\$ 1,500.00	1	\$ 1,500.00
TOTAL INVESTMENT					\$ 128,430.00
MINIMUM INVESTMENT					\$ 104,930.00



Figure 100: The Isles of Bayshore Neighborhood Hub Location Map

Table 53: Marlin Road Community Hub Amentias Cost Estimate

MARLIN ROAD COMMUNITY MOBILITY HUB					
Recommended Amenities	Unit	Measurement	Price	Quantity	Cost
Standard Town Shelter	EA	Shelter, Seating, Garbage, Bike Rack, Lighting, Concrete	\$ 43,330.00	2	\$ 86,660.00
Real Time Information Signage	EA	Equipment & Installation	\$ 400.00	2	\$ 800.00
Bike Share	EA	Station (10 Bikes)	\$ 54,000.00	1	\$ 54,000.00
Emergency Callbox	EA	Equipment & Installation	\$ 5,500.00	2	\$ 11,000.00
Mechanical Box Wrap	EA	\$15/SF (Avg. Cost for Installation & Material)	\$ 1,000.00	1	\$ 1,000.00
Library Share	EA	Equipment, Install & Registration	\$ 200.00	1	\$ 200.00
USB Charging Station	EA	Free Standing Station (10 phones)	\$ 1,500.00	1	\$ 1,500.00
Security Camera	EA	Equipment & Installation	\$ 600.00	2	\$ 1,200.00
EV Charging	EA	Equipment & Installation	\$ 8,000.00	3	\$ 24,000.00
Carshare		Public Private Partnership	\$ 0.00	Varies	\$ 0.00
Bicycle Storage Locker	EA	Equipment & Installation	\$ 2,140.00	2	\$ 4,280.00
OPTIONAL:					
WIFI	EA	Equipment & Installation	\$ 400.00	1	\$ 400.00
Package Kiosk	EA	Public Private Partnership	\$ 0.00	1	\$ 0.00
Bicycle Repair Station	EA	Equipment & Installation	\$ 1,500.00	1	\$ 1,500.00
Bicycle Signal	EA	Equipment	\$ 1,000.00	2	\$ 2,000.00
Info Kiosk	EA	75" Digital Display Board	\$ 6,000.00	1	\$ 6,000.00
Air Misting System	EA	Equipment & Installation	\$ 5,000.00	2	\$ 10,000.00
TOTAL INVESTMENT					\$ 204,540.00
MINIMUM INVESTMENT					\$ 104,430.00



Figure 101: Marlin Road Community Hub Location Map

Table 54: South Dade Government Center Community Hub Amenities Cost Estimate

SOUTH DADE GOVERNMENT CENTER COMMUNITY MOBILITY HUB					
Recommended Amenities	Unit	Measurement	Price	Quantity	Cost
Standard Town Shelter	EA	Shelter, Seating, Garbage, Bike Rack, Lighting, Concrete	\$43,330.00	2	\$ 86,660.00
Real Time Information Signage	EA	Equipment & Installation	\$ 400.00	2	\$ 800.00
USB Charging Station	EA	Free Standing Station (10 phones)	\$ 1,500.00	1	\$ 1,500.00
Bike Share	EA	Station (10 Bikes)	\$54,000.00	1	\$ 54,000.00
Bicycle Storage Locker	EA	Equipment & Installation	\$ 2,140.00	4	\$ 8,560.00
Emergency Callbox	EA	Unit & Construction	\$ 5,500.00	2	\$ 11,000.00
Mechanical Box Wrap	EA	\$15/SF (Avg. Cost for installation & material)	\$ 1,000.00	7	\$ 7,000.00
Package Kiosk	EA	Public Private Partnership	\$ 0.00	1	\$ 0.00
Carshare		Public Private Partnership	\$ 0.00		\$ 0.00
EV Charging	EA	Equipment & Installation	\$ 8,000.00	2	\$16,000.00
Security Camera	EA	Equipment & Installation	\$ 600.00	2	\$ 1,200.00
Library Share	EA	Equipment, Install & Registration	\$ 200.00	1	\$ 200.00
OPTIONAL:					
WIFI	EA	Equipment & Installation	\$ 400.00	1	\$ 400.00
Bicycle Repair Station	EA	Equipment & Installation	\$1,500.00	1	\$ 1,500.00
Bicycle Signal	EA	Equipment	\$1,000.00	8	\$ 8,000.00
Air Misting System	EA	Equipment & Installation	\$5,000.00	2	\$10,000.00
Info Kiosk	EA	75" Digital Display Board	\$6,000.00	1	\$ 6,000.00
TOTAL INVESTMENT					\$212,820.00
MINIMUM INVESTMENT					\$186,920.00

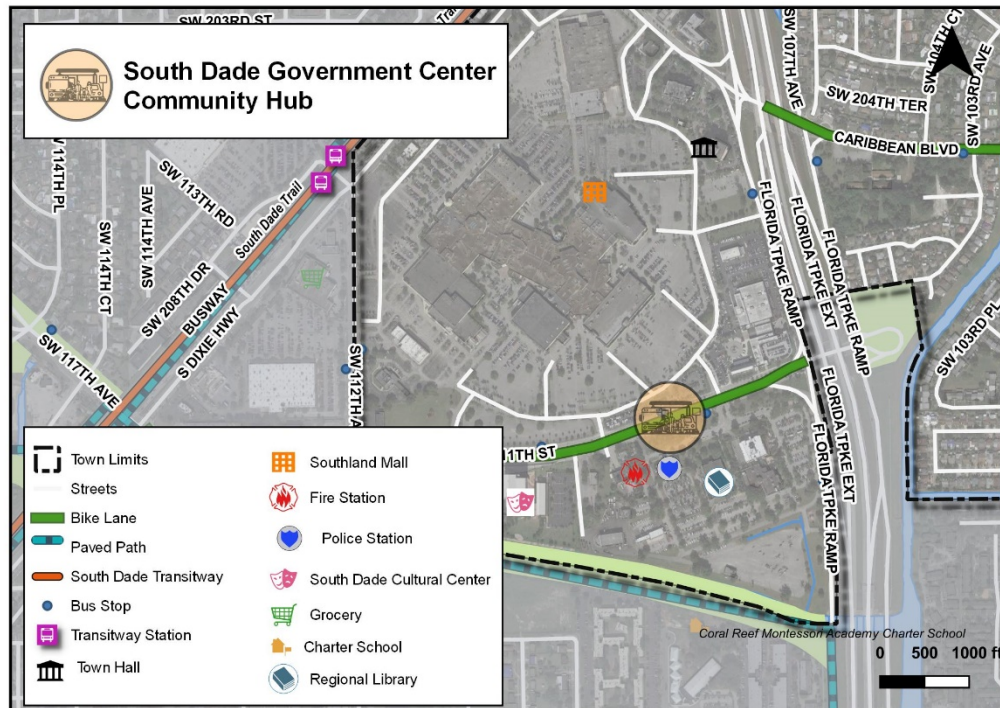


Figure 102: South Dade Government Center Location Map

Table 55: Lakes by the Bay Neighborhood Hub Amenities Cost Estimate

LAKES BY THE BAY NEIGHBORHOOD MOBILITY HUB					
Recommended Amenities	Unit	Measurement	Price	Quantity	Cost
Recycle Receptacle	EA	Equipment & Installation	\$ 500.00	2	\$ 1,000.00
Real Time Information Signage	EA	Equipment & Installation	\$ 400.00	2	\$ 800.00
Bike Share	EA	Station (10 Bikes)	\$54,000.00	1	\$54,000.00
Emergency Callbox	EA	Equipment & Installation	\$ 5,500.00	2	\$11,000.00
Mechanical Box Wrap	EA	\$15/SF (Avg. Cost for installation & material)	\$ 1,000.00	2	\$ 2,000.00
Library Share	EA	Equipment, Install & Registration	\$ 200.00	1	\$ 200.00
OPTIONAL:					
WIFI	EA	Equipment & Installation	\$ 400.00	1	\$ 400.00
Security Camera	EA	Equipment & Installation	\$ 600.00	2	\$ 1,200.00
USB Charging Station	EA	Free Standing Station (10 phones)	\$ 1,500.00	1	\$ 1,500.00
Bicycle Repair Station	EA	Equipment & Installation	\$ 1,500.00	1	\$ 1,500.00
Air Misting System	EA	Equipment & Installation	\$ 5,000.00	2	\$10,000.00
Bicycle Storage Locker	EA	Equipment & Installation	\$ 2,140.00	2	\$ 4,280.00
TOTAL INVESTMENT					\$87,880.00
MINIMUM INVESTMENT					\$61,600.00

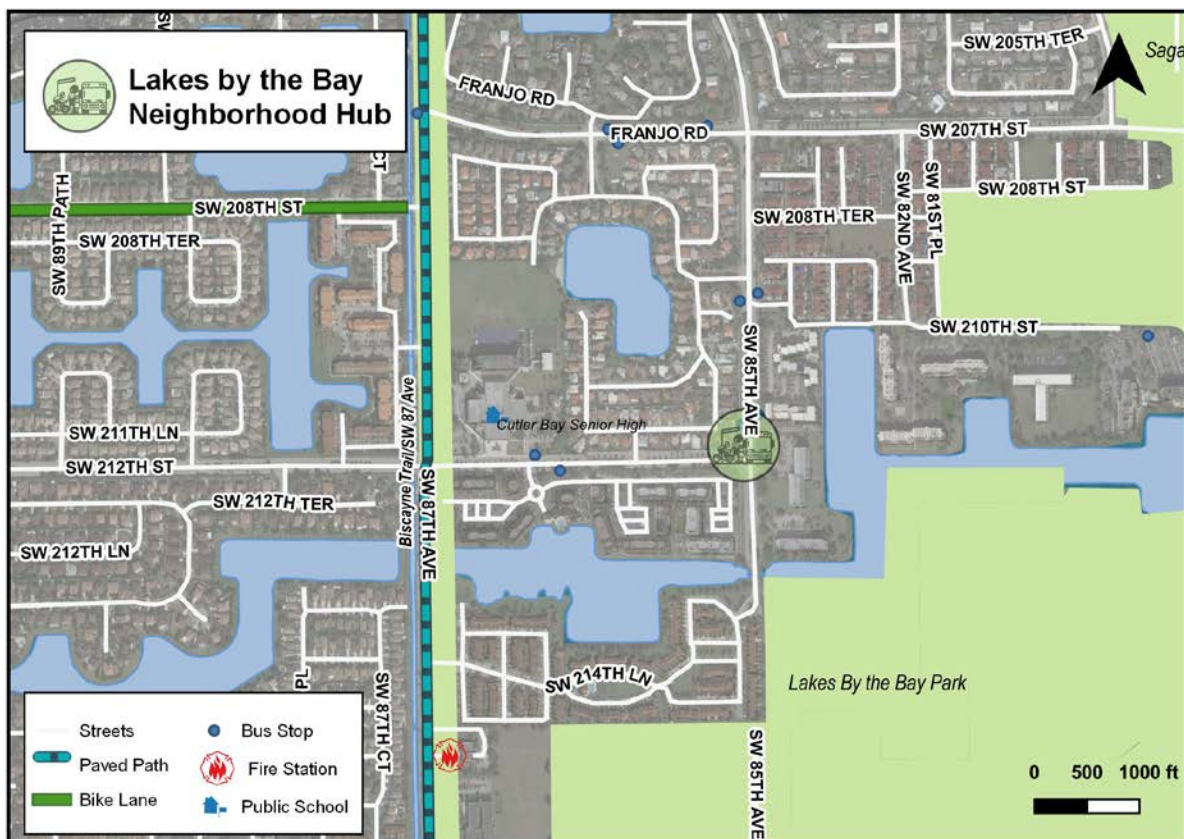


Figure 103: Lakes by the Bay Neighborhood Hub Location Map

Table 56: Eureka Drive East Neighborhood Hub Amenities Cost Estimate

EUREKA DRIVE EAST NEIGHBORHOOD HUB					
Recommended Amenities	Unit	Measurement	Price	Quantity	Cost
Standard Town Shelter	EA	Shelter, Seating, Garbage, Bike Rack, Lighting, Concrete	\$ 43,330.00	1	\$ 43,330.00
Real Time Information Signage	EA	Equipment & Installation	\$ 400.00	1	\$ 400.00
Bike Share	EA	Station (10 Bikes)	\$ 54,000.00	1	\$ 54,000.00
Emergency Callbox	EA	Equipment & Installation	\$ 5,500.00	1	\$ 5,500.00
USB Charging Station	EA	Free Standing Station (10 phones)	\$ 1,500.00	1	\$ 1,500.00
Library Share	EA	Equipment, Install & Registration	\$ 200.00	1	\$ 200.00
OPTIONAL:					
Security Camera	EA	Equipment & Installation	\$ 600.00	1	\$ 600.00
WIFI	EA	Equipment & Installation	\$ 400.00	1	\$ 400.00
Package Kiosk	EA	Public Private Partnership	\$ 0.00	1	\$ 0.00
Bicycle Repair Station	EA	Equipment & Installation	\$ 1,500.00	1	\$ 1,500.00
Bicycle Signal	EA	Equipment	\$ 1,000.00	2	\$ 2,000.00
Air Misting System	EA	Equipment & Installation	\$ 5,000.00	1	\$ 5,000.00
Bicycle Storage Locker	EA	Equipment & Installation	\$ 2,140.00	2	\$ 4,280.00
TOTAL INVESTMENT					\$118,710.00
MINIMUM INVESTMENT					\$104,930.00



Figure 104: Eureka Drive East Neighborhood Hub Location Map

Table 57: Cutler Ride Neighborhood Hub Amenities Cost Estimate

CUTLER RIDGE NEIGHBORHOOD MOBILITY HUB					
Recommended Amenities	Unit	Measurement	Price	Quantity	Cost
Recycle Receptacle	EA	Equipment & Installation	\$ 500.00	2	\$ 1,000.00
Real Time Information Signage	EA	Equipment	\$ 400.00	2	\$ 800.00
Bike Share	EA	Station (10 Bikes)	\$ 54,000.00	1	\$54,000.00
Emergency Callbox	EA	Unit & Construction	\$ 5,500.00	2	\$11,000.00
Mechanical Box Wrap	EA	\$15/SF (Avg. Cost for installation & material)	\$ 1,000.00	3	\$ 3,000.00
USB Charging Station	EA	Free Standing Station (10 phones)	\$ 1,500.00	1	\$ 1,500.00
Library Share	EA	Equipment, Install & Registration	\$ 200.00	1	\$ 200.00
OPTIONAL:					
Security Camera	EA	Equipment & Installation	\$ 600.00	2	\$ 1,200.00
WIFI	EA	Equipment & Installation	\$ 400.00	1	\$ 400.00
Bicycle Repair Station	EA	Equipment & Installation	\$ 1,500.00	1	\$ 1,500.00
Bicycle Storage Locker	EA	Equipment & Installation	\$ 2,140.00	2	\$ 4,280.00
EV Charging	EA	Equipment & Installation	\$ 0.00	2	\$ 0.00
Carshare		Public Private Partnership	\$ 0.00	Varies	\$ 0.00
Bicycle Repair Station	EA	Equipment & Installation	\$ 1,500.00	1	\$ 1,500.00
Air Misting System	EA	Equipment & Installation	\$ 5,000.00	2	\$ 10,000.00
Bicycle Signal	EA	Equipment	\$ 1,000.00	2	\$2,000.00
TOTAL INVESTMENT					\$92,380.00
MINIMUM INVESTMENT					\$71,500.00

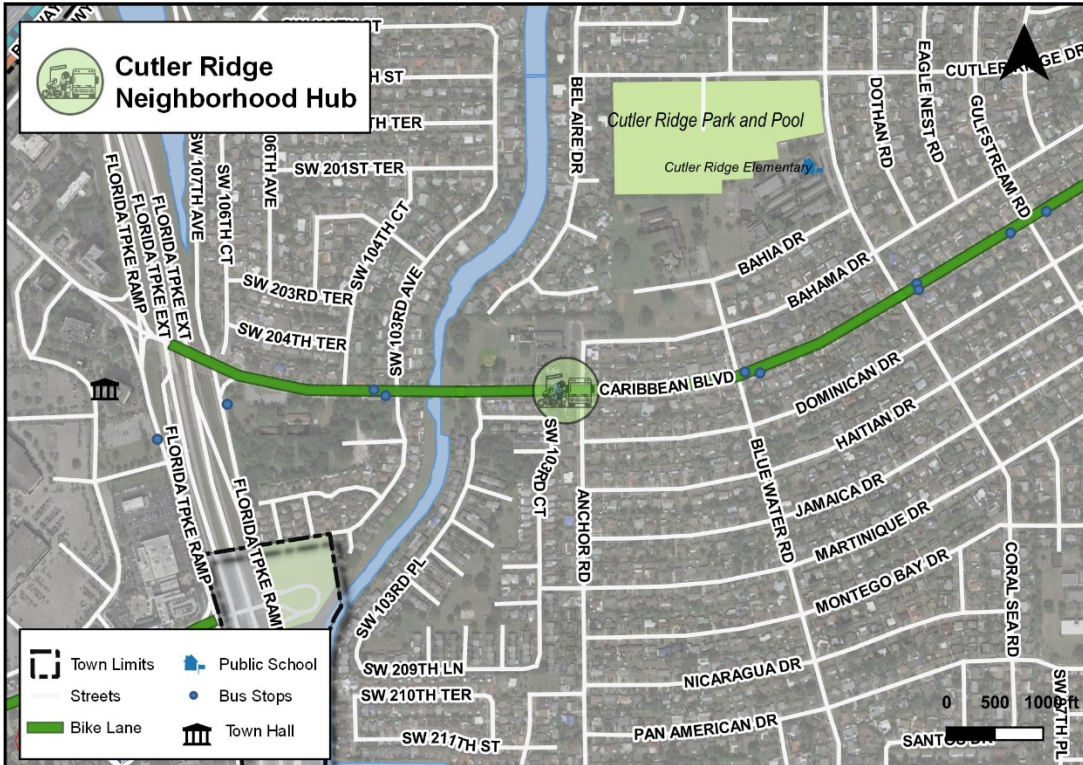


Figure 105: Cutler Ridge Neighborhood Hub Location Map