

SW 168 Street

Attachment "B" (Page 1 of 7)

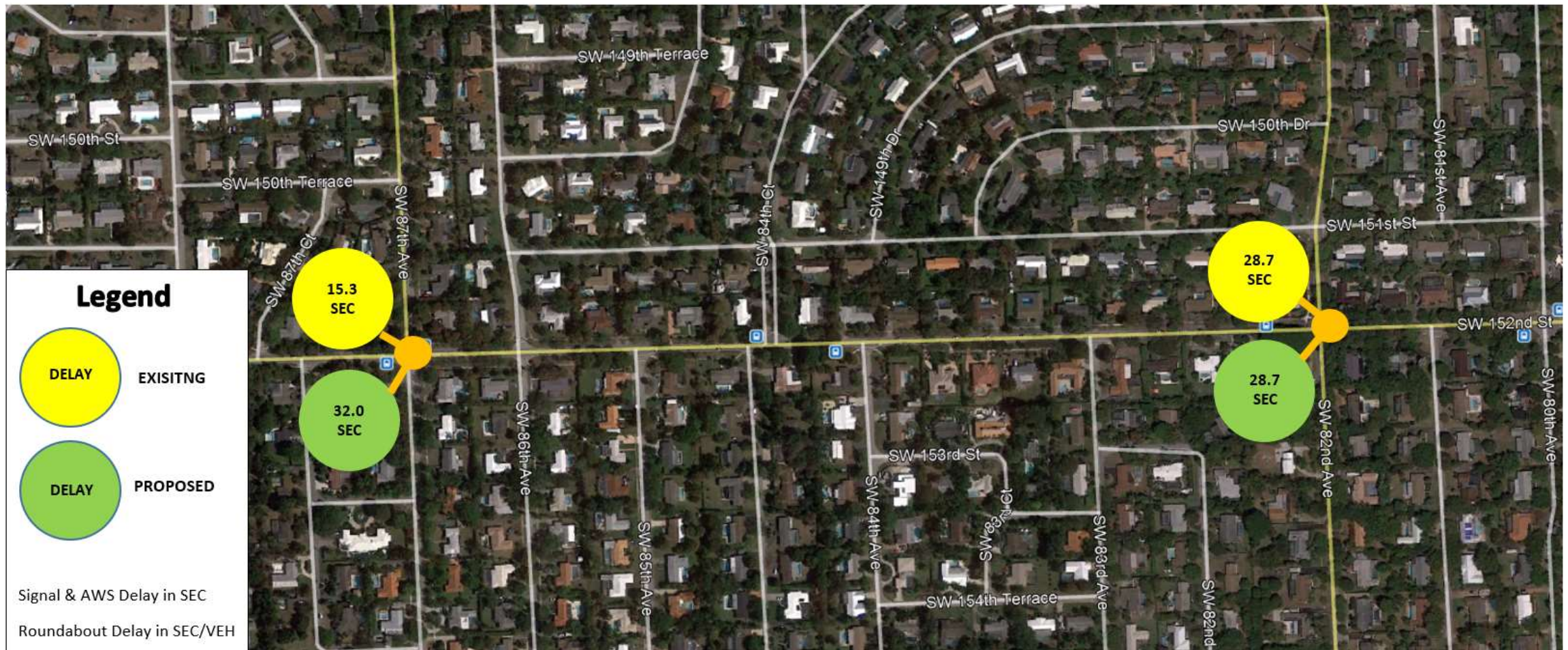


SW 160 Street

Attachment "B" (Page 2 of 7)




SW 152 Street

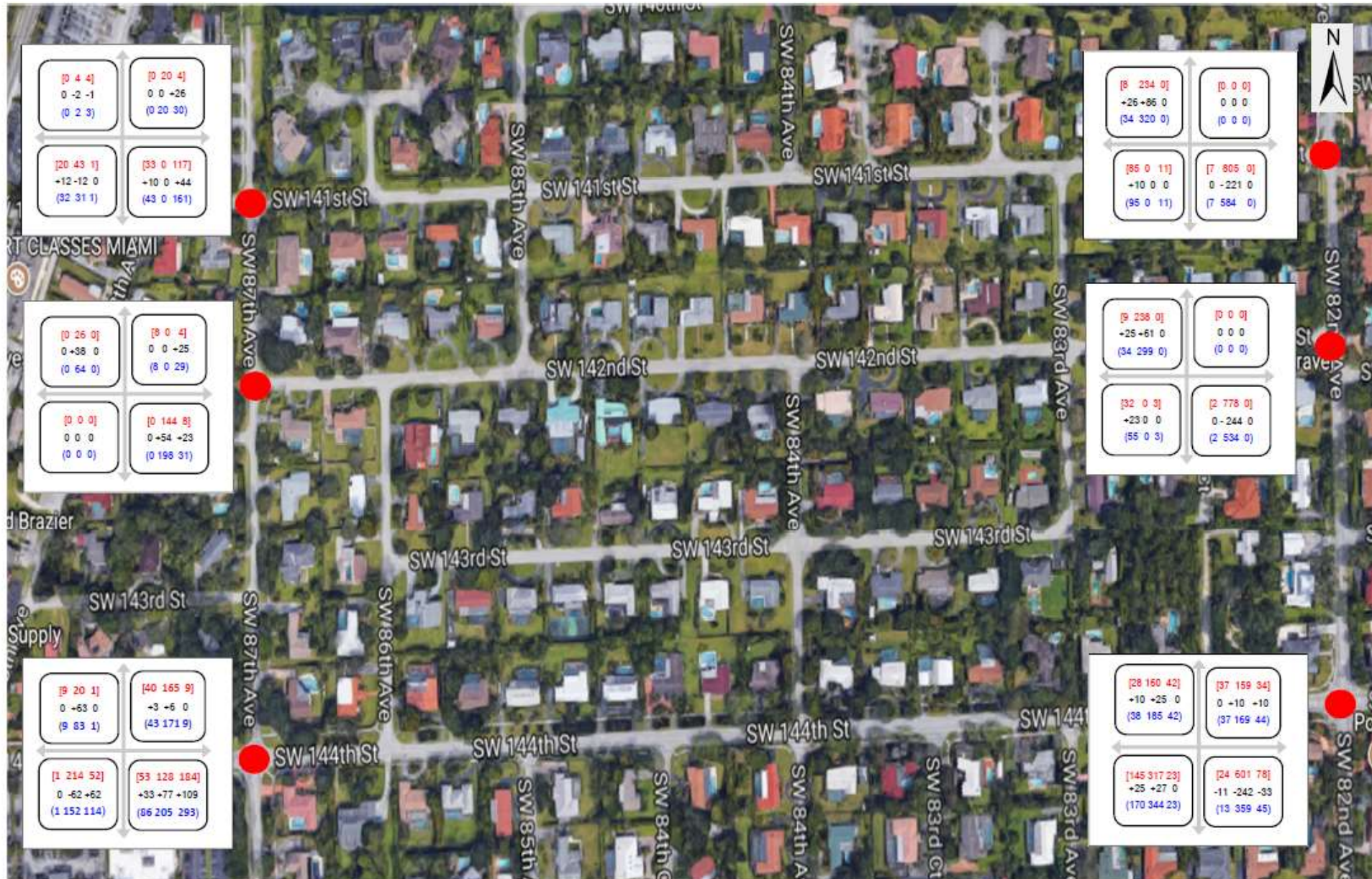


SW 144 & 141 Street

LEGEND

SB	WB
EB	NB

[XXX] + - [XXX]	[EXISTING] + - Trip # [BUILT]
[XXX] + - [XXX]	 LEFT THRU RIGHT



35% of SW 82 Ave NB traffic was shifted to SW 87 Ave

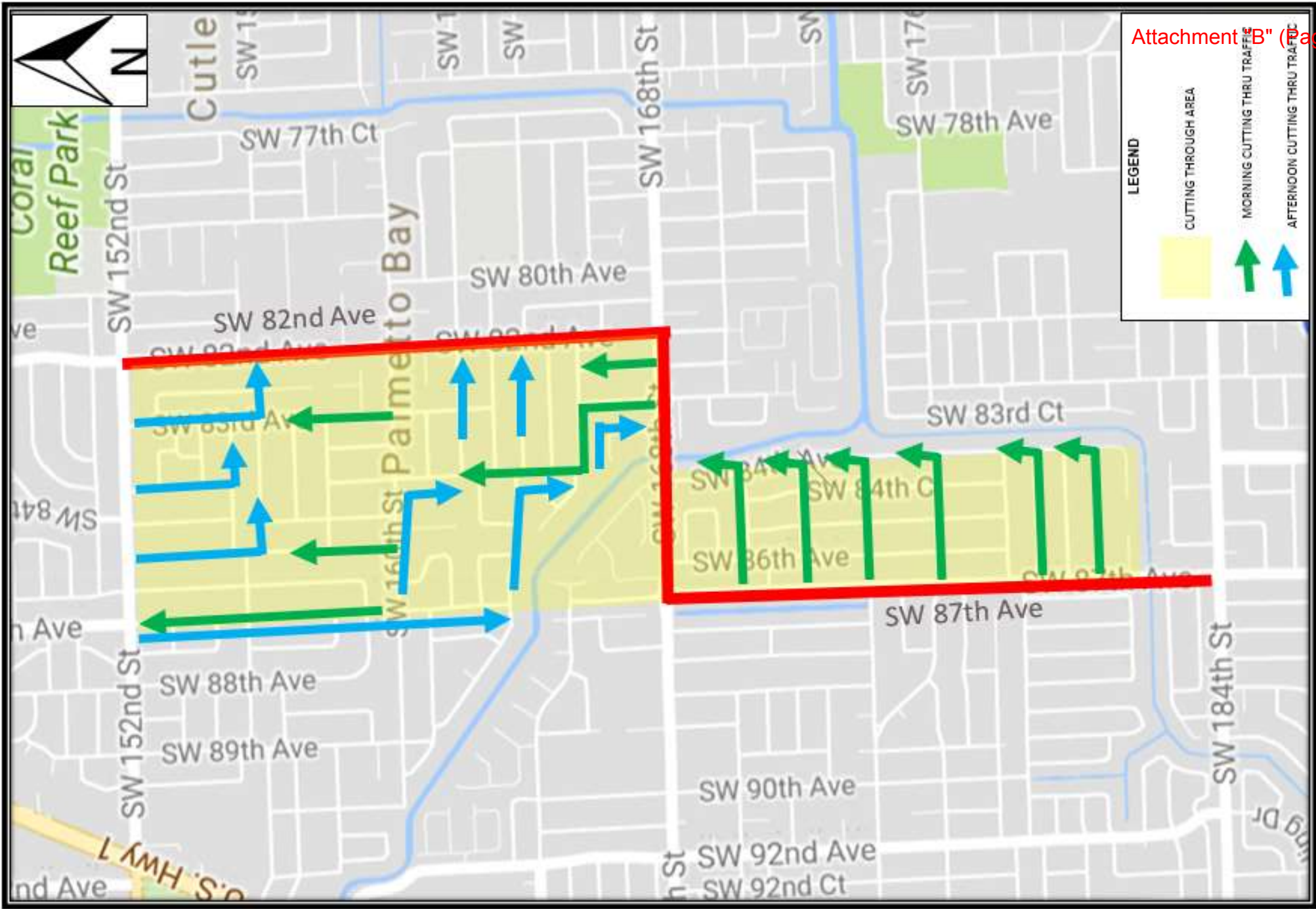
Attachment "B" (Page 5 of 7)

LEGEND

SB	WB
EB	NB

(xxx) +- (xxx)	[EXISTING] +- Trip # (BUILT)
(xxx) +- (xxx)	 LEFT THRU RIGHT





Time savings

- With previous studies, it was determined that saving delay of 1 min/Veh, on average, represents an overall improvement of 10% delay at the intersection. What does it mean for the current study?:
 - For reference during school recess traffic congestion reduces by 4%
 - SW 82 Ave and SW 168 Street, 4 min/veh in delay reduction will generate a 40% delay reduction at the intersection
 - SW 87 Ave and SW 168 Street, 1 min/veh in delay reduction will generate a 10% delay reduction at the intersection
- This will equate to a reduction of the peak period since more vehicles are going to cross the intersections faster, providing for a higher traffic volume during a shorter period of time.
 - Existing peak period = 4 hrs (6-10am) and 4 hrs (3-7pm)
 - Future peak period = 2.5 hrs for both am and pm peak periods