



SMART PLAN

South Dade Transitway Corridor

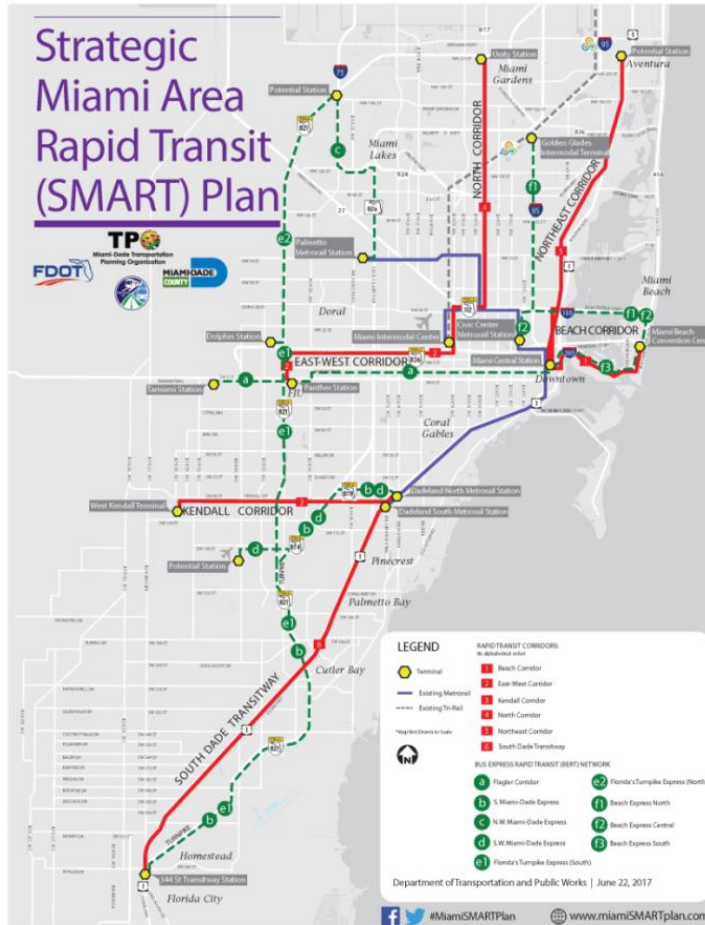
Cutler Bay Town Council Presentation
November 15 2017



Miami-Dade Transportation
Planning Organization



SMART PLAN



SMART Plan adopted on April 21, 2016

Includes 6 major rapid transit corridors and a Bus Express Rapid Transit Network (9 routes)

SOUTH DADE TRANSITWAY CORRIDOR

- The South Dade Transitway currently operates the only dedicated busway in Miami-Dade County
- Approximate distance of 20 miles spanning from SW 344th Street to the Dadeland South Metrorail Station
- Approximately 20,000 parcels are being reviewed

South Dade Transitway Corridor

UNINCORPORATED MIAMI-DADE
COUNTY WITH THE COMMUNITIES OF:

- VILLAGE OF PINECREST
- VILLAGE OF PALMETTO BAY
- TOWN OF CUTLER BAY
- CITY OF HOMESTEAD
- FLORIDA CITY



LAND USE SCENARIO AND VISIONING PLANNING

Purpose

- Develop Land Use Scenarios to support the South Dade Transitway Corridor of the SMART Plan
- Provide the technical basis for development of transit supportive land uses – whatever the final Alternative is we need to make sure we can provide the development (residential and employment centers) to support it
- Facilitate the movement of passengers throughout the Region



HOW DO WE GET THERE?

Study Advisory Committee was Created

- Each Municipality is Represented along with others
 - Will meet multiple times throughout life of project
- Review parcel data
- Review and Approve Land Use Strategies
- Provide the technical basis for development of transit supportive land uses
- Develop Land Use Scenarios to support the South Dade Transitway Corridor. Review and approve distinct scenarios for testing
- Approve final recommended scenario

South Dade Transitway Corridor



REDEVELOPMENT SUITABILITY SCORE

How its Done

- Single Numerical Score that reflects a parcel's suitability for development/redevelopment.
- Composed of five scores on parcels, attributes connected to redevelopment suitability.
- Assigns relative weights for each of the five components.



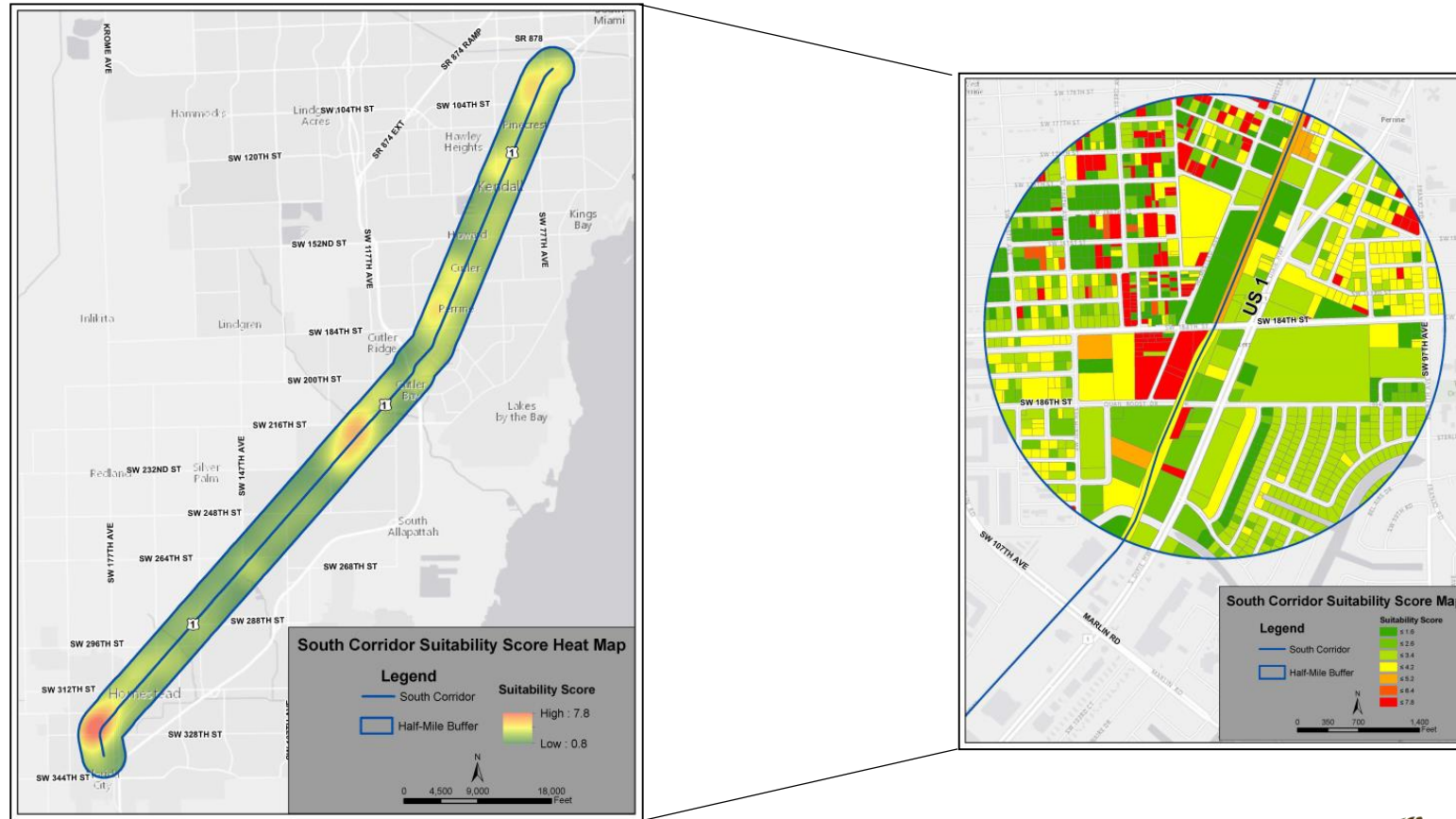
REDEVELOPMENT SUITABILITY SCORE

Score Components and Weights

WEIGHTS	
Component	Weight
Land Use	0.2
Vacant	0.2
Year Built	0.2
Improvement Ratio	0.2
RFAR	0.2

SUITABILITY SCORING OVERVIEW

184th Street Area Parcel Assessment



South Dade Transitway Corridor

SUITABILITY SCORING OVERVIEW

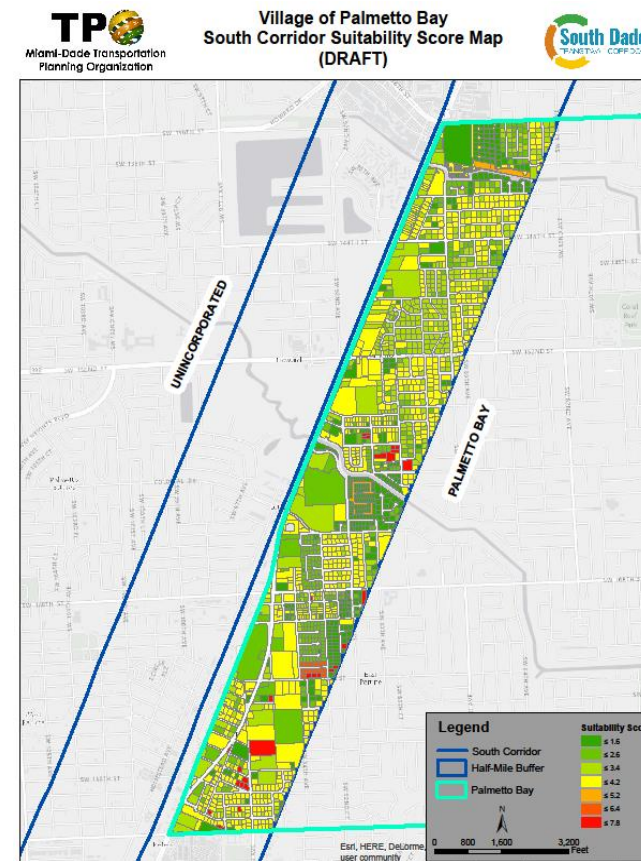
184th Street Area Suitability Score



South Dade Transitway Corridor

SUITABILITY SCORING OVERVIEW

Each Municipality and Miami-Dade County have Received Maps to Review Parcel Conditions for Suitability Accuracy



South Dade Transitway Corridor

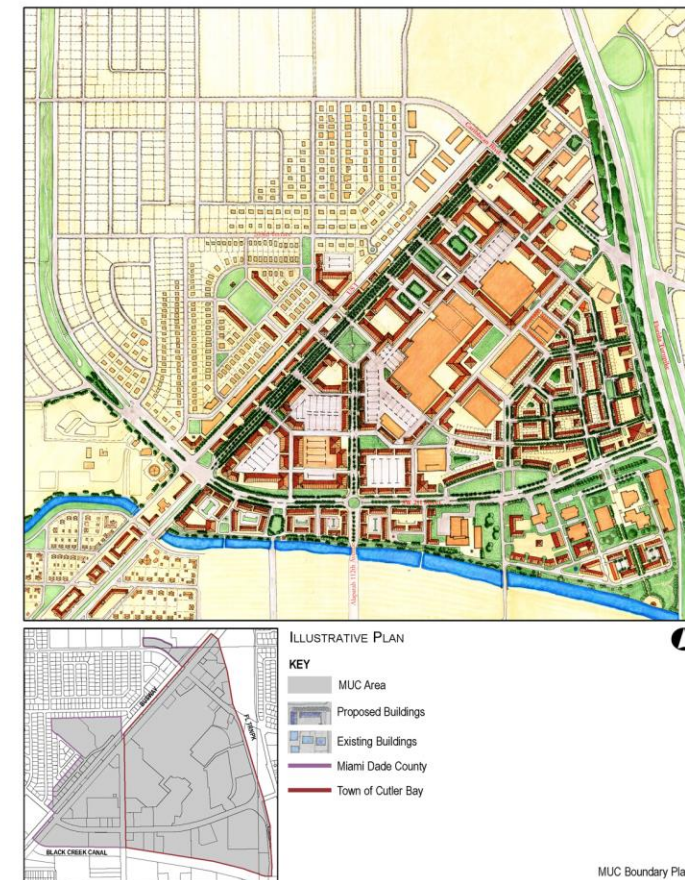
LITERATURE REVIEW

What has been Done Before?

Previous Plans/Charrettes:

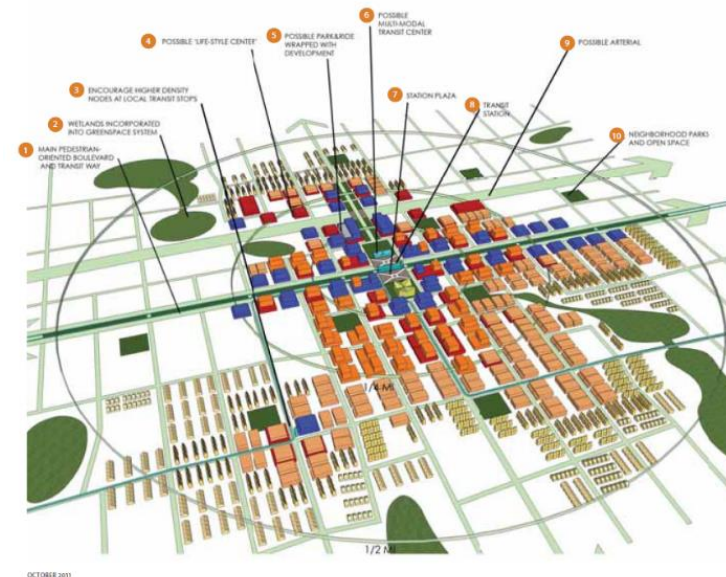
- Cutler Ridge
- Downtown Kendall
- East Kendall
- Goulds
- Leisure City
- Naranja
- Perrine
- Princeton
- Pinecrest Parkway (US1) Vision Plan
- Literature Review of Transit Studies - Multiple
- First/Last Mile Study (Ongoing)

September 2002
 June 1998 (Built)
 June 2008
 1999
 October 2004
 August 2001
 January 2003
 June 2003
 October 2012



TESTING AND RIDERSHIP FORECASTING

- Evaluate land use scenarios developed through Charrettes and Study Advisory Committee direction
- Model land use scenarios using 3-D tool
- Generate transit ridership estimates based on the land use scenarios



Station area vision will shape development pattern and transit ridership potential

VISIONING AND CHARRETTE: THE PROCESS

DESIGNING IN PUBLIC



Hands-on Activities Planned for December

South Dade Transitway Corridor

VISIONING AND CHARRETTE: THE PROCESS

DESIGNING IN PUBLIC



Visioning

South Dade Transitway Corridor

VISIONING AND CHARRETTES: THE PROCESS

ONE WORD that comes to mind
about **SOUTH CORRIDOR**:

NOW: _____

IN THE FUTURE:

(in my vision)

One-Word Card



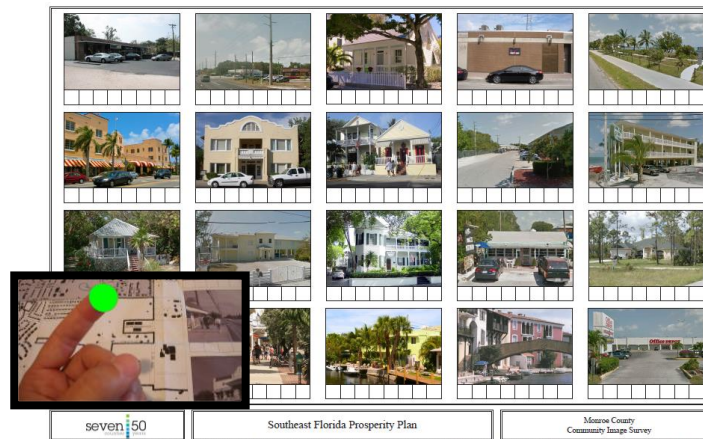
Scenario Planning

Of the many potential goals to pursue, which are **MOST IMPORTANT TO YOU**?

create alternative ways of transportation	add new retail and entertainment along south corridor	provide better connectivity	reduce vehicle miles traveled and greenhouse gas emissions	add new residents that help support South Corridor businesses
make transit more time-competitive with automobile travel	increase access to the destinations along South Corridor	add new workplaces and services along transit for residents	create walkable and bikable places	attract more visitors to the South Corridor
other (add your ideas here!)				

SMART PLAN SOUTH CORRIDOR

Goals Poster



Community Image Survey

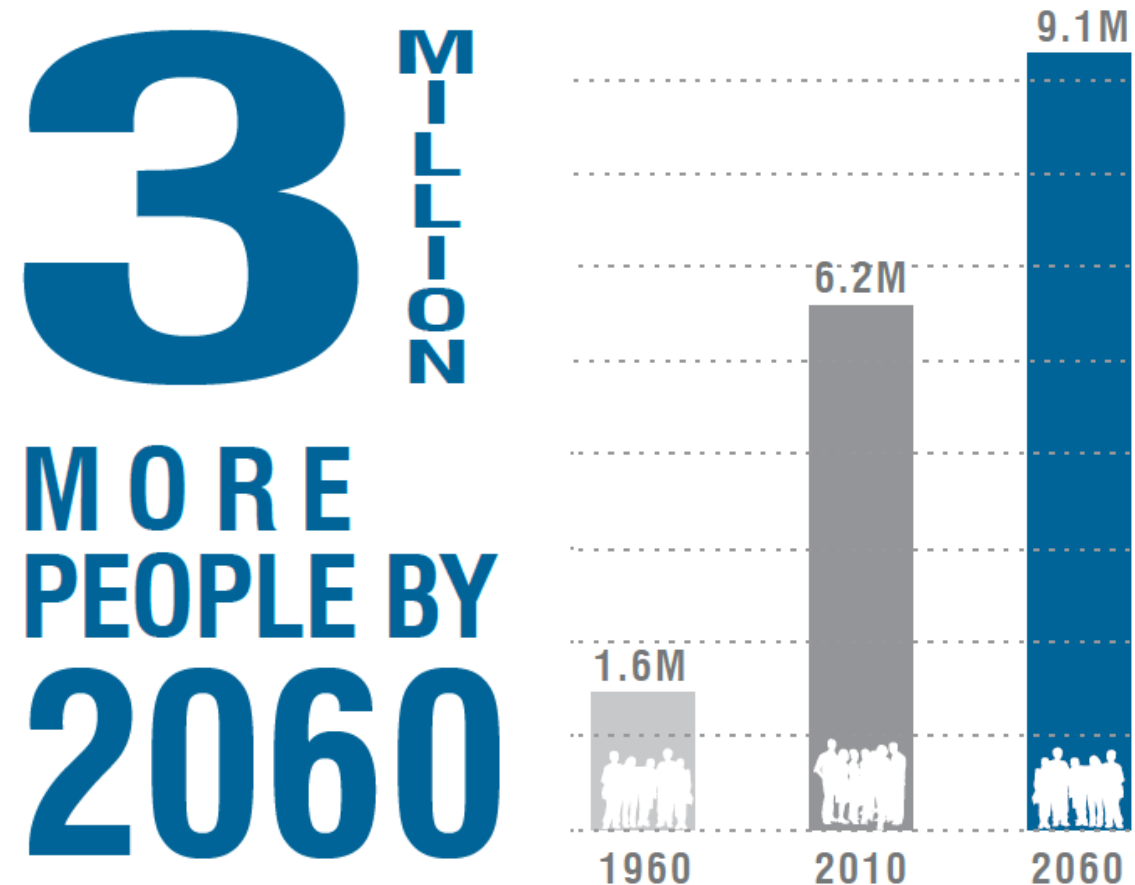
SMART PLAN SOUTH CORRIDOR

Of the many ideas discussed, which are most exciting to you?

What questions or suggestions do you have?

Detailed Surveys

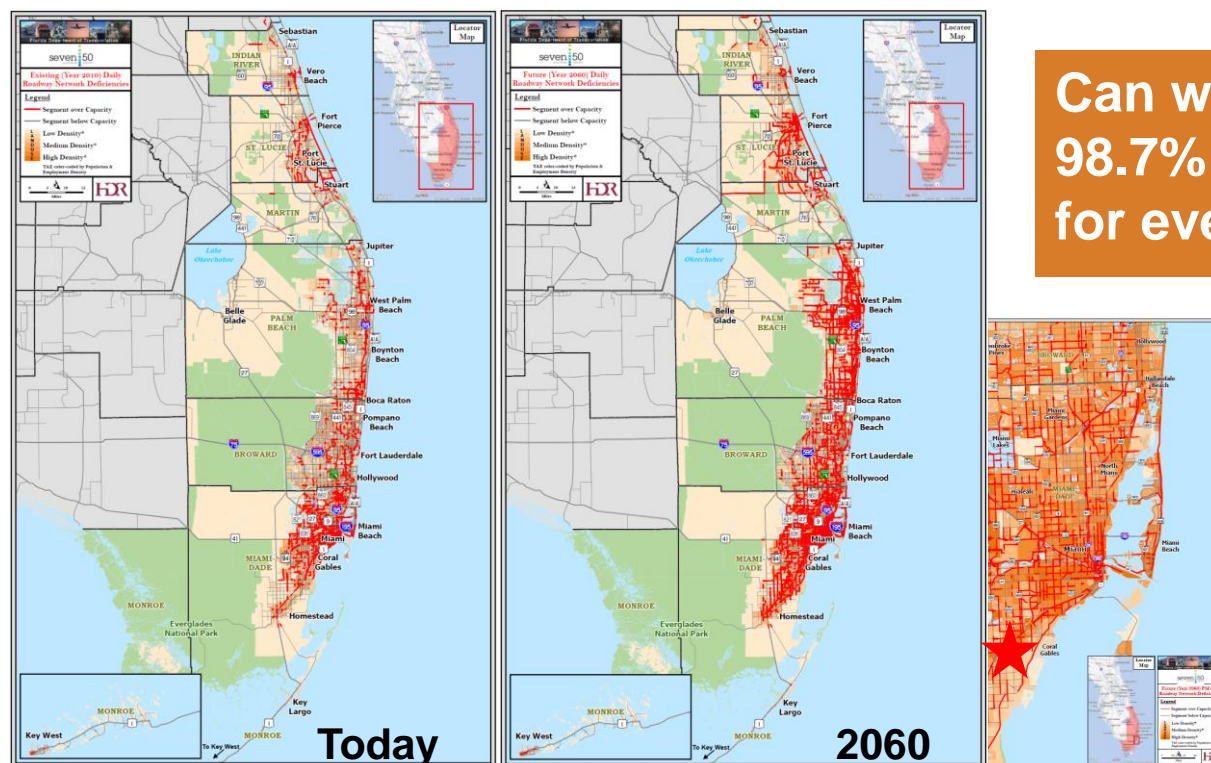
VISIONING AND CHARRETTES: THE CHALLENGE IN SOUTH FLORIDA



South Dade Transitway Corridor

VISIONING AND CHARRETTE: TRAFFIC

Anticipated Future Roadway Deficiencies If Current Trends Continue....



Can we afford to have 98.7% of people driving for every trip?

South Dade Transitway Corridor

VISIONING AND CHARRETTES: TRAFFIC

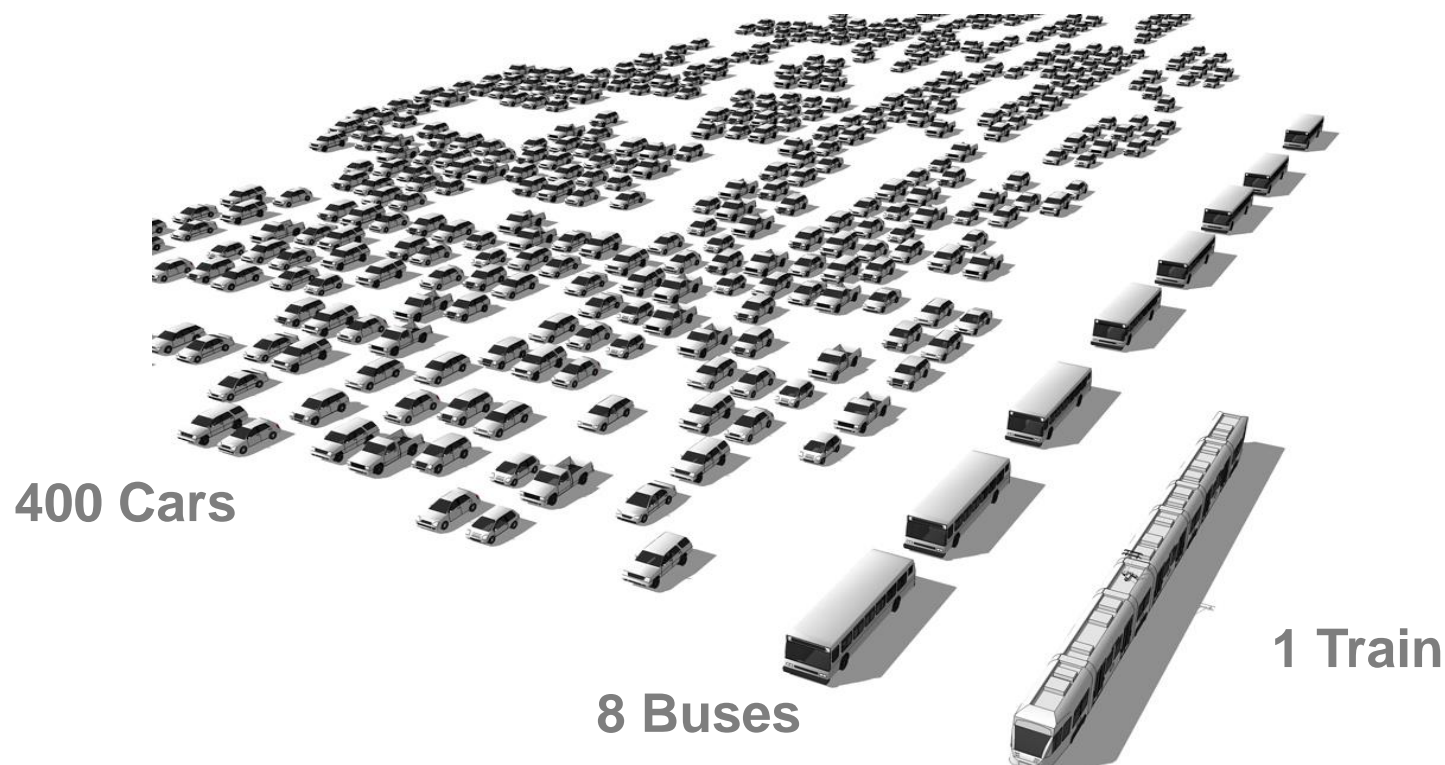
Families Are Spending A Lot To Commute

- Just about everyone in the Southern Corridor commutes to work over 30 minutes (83%)
- Southern Corridor residents (living from Miami to Homestead) have the **least number** of transit commuters in the Miami Dade Region: 1.1%
- Southern Corridor residents have the **lowest number** of commuters who walk or bike in the Miami Dade Region: 0.4%
- Southern Corridor residents **pay 32% of household income** (\$64,166 median household per year) in driving costs. Driving costs are affordable at 15%.
- Families decrease driving costs by biking, walking, or using transit more.

VISIONING AND CHARRETTE: TRAFFIC

Reduce Traffic

400 Cars = 8 Buses = 1 Train



South Dade Transitway Corridor

MULTI-MEDIA COMMUNICATIONS

Messaging and Public Relations Outreach We Need Your Help to Get the Word Out

The hyper-local messaging and public relations outreach program is designed to increase public awareness and maximize attendance for the SMART Plan charrette series for the South Dade Transitway Corridor across a broad section of stakeholders.

Communication strategies and tactics involve:

- Media
- Social Media
- Email Communications

UPCOMING EVENTS

SAVE THE DATES

South Corridor

Saturday

December 2, 2017

9:00 AM – 1:00 PM Two 2 hour Sessions

Town of Cutler Bay Town Hall

10720 Caribbean Boulevard, 6th Floor

Cutler Bay, FL 33189

Thursday

December 14, 2017

6:00 PM – 8:00 PM

City of Homestead City Hall

100 Civic Court

Homestead, FL 33030

Wednesday

December 6, 2017

6:00 PM – 8:00 PM

Village of Pinecrest

Evelyn Greer Park Meeting Room

8200 SW 124th Street

Pinecrest, FL 33156

For more information please contact:
Alex David, Consultant Team Co-Manager
at 786.485.5192 or
ADavid@CGASolutions.com

South Dade Transitway Corridor



TPO Project Manager

Jeannine Gaslonde

(305) 375-1739

Jeannine.Gaslonde@miamidade.gov

CGA Project Manager

Eric Czerniejewski, P.E., ENV SP

(954) 766-2735

ECzerniejewski@cgasolutions.com

CGA Project Manager

Alex A. David, AICP

(786) 485-5192

ADavid@cgasolutions.com

THANK YOU

Any Questions?

www.miamiSMARTplan.com



#MiamiSMARTPlan

South Dade Transitway Corridor



SMART Implementation Plan Charrettes

Transit supportive land use plays a critical role in the success of major rapid transit investments. The Miami-Dade TPO is now examining this interrelationship to complement the SMART Plan, which is intended to help achieve community goals through integrating transportation land use planning and development of strategies.

SMART Implementation Plan Charrettes

Two (2) series of charrettes will be conducted for the South Corridor, which runs from the Metrorail Dadeland South Station to Florida City (SW 344 Street). The first corridor charrette series will be conducted in December. Charrettes are intensive planning sessions where citizens, designers and others will be collaborating on a vision for the Corridor. The Charrettes will be organized to encourage the participation of everyone who is interested in the making of a vision for the Community: interested residents, business owners, associations, government, the development community and activists.

SAVE THE DATES

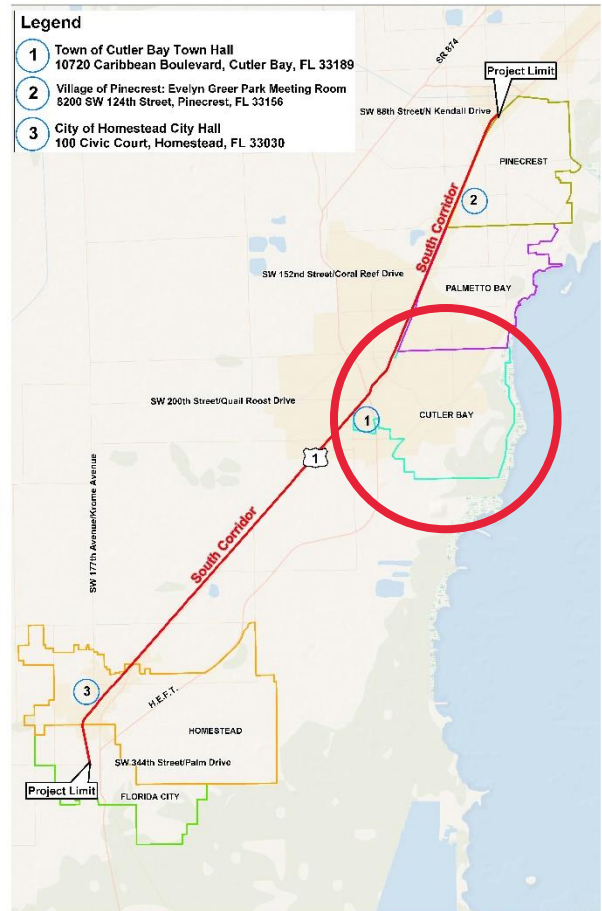
South Corridor

Saturday
December 2, 2017
9:00 AM – 1:00 PM
Town of Cutler Bay Town Hall
10720 Caribbean Boulevard, Penthouse
Cutler Bay, FL 33189

Wednesday
December 6, 2017
6:00 PM – 8:00 PM
Village of Pinecrest
Evelyn Greer Park Meeting Room
8200 SW 124th Street
Pinecrest, FL 33156

Thursday
December 14, 2017
6:00 PM – 8:00 PM
City of Homestead City Hall
100 Civic Court
Homestead, FL 33030

For more information please contact:
Alex David, Consultant Team Co-Manager at 786.485.5192
or ADavid@CGASolutions.com



Public participation is solicited without regard to race, color, national origin, age, sex, religion, disability, or family status. Persons who require special accommodations under the Americans with Disabilities Act (ADA) or persons who require translation services, should contact Lorraine Reigosa, Consultant Public Information Officer for the South Corridor at 305.705.6342. at least seven days prior to the public meeting.